

COVER PAGE

AWARD NUMBER: G16AC00074

SPONSORING ORGANIZATION: Texas Water Development Board

PROJECT TITLE: Texas Water Development Board Maintenance of Monitoring Site Selection and Web Services for the National Ground-Water Monitoring Network

CONTACT PERSON: Janie Hopkins

TITLE: Manager, Groundwater Monitoring Section

ADDRESS: 1700 North Congress Ave., Austin, TX 78711-3231

PHONE: (512) 936-0841

FAX: (512) 936-0816

EMAIL: Janie.hopkins@twdb.texas.gov

CONTACT PERSON 2: David Carter

TITLE: Director, Support Services and Contract Administration

ADDRESS: 1700 North Congress Ave., Austin, TX 78711-3231

PHONE: (512) 936-6079

FAX: (512) 936-0816

EMAIL: david.carter@twdb.texas.gov

TERM COVERED: June 1, 2016 to September 30, 2017

FINAL REPORT DATE: December 31, 2017

Overview

Summary of Texas Water Development Board’s participation in the National Ground-water Monitoring Network

The Texas Water Development Board (TWDB) has participated in the National Ground-Water Monitoring Network (NGWMN, or Network) since its acceptance as a pilot project in 2009. The TWDB, mandated and allowed by the Texas Water Code to collect groundwater data, is the only agency in Texas that maintains statewide water-level and water-quality monitoring programs that include suitable sites available for inclusion in the NGWMN. TWDB has now selected just over 1,400 representative wells and springs with water-level and water-quality data in eight of the state’s nine major aquifers (Figure 1) for the NGWMN between 2009 and 2017 and provided web services for data retrieval in the NGWMN portal. Six of the eight principal or national aquifers underlying Texas (Table 1) primarily correspond to the eight major Texas aquifers, although configurations of the aquifers differ slightly (Figure 2).

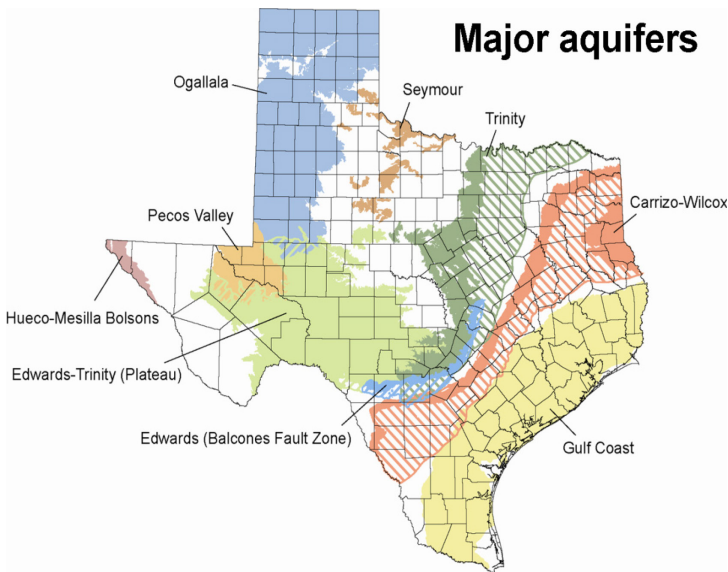


Figure 1. Major aquifers in Texas

Table 1. Principal aquifers and corresponding major Texas aquifers.

Principal Aquifer	Texas Aquifer Name
Coastal lowlands aquifer system	Gulf Coast Aquifer
Texas coastal uplands aquifer system	Carrizo-Wilcox Aquifer
Edwards-Trinity aquifer system	Trinity Aquifer
Edwards-Trinity aquifer system	Edwards (Balcones Fault Zone) (BFZ) Aquifer
Edwards-Trinity aquifer system	Edwards-Trinity (Plateau) Aquifer
Seymour aquifer	Seymour Aquifer
Pecos River Basin alluvial aquifer	Pecos Valley Aquifer
Rio Grande aquifer system	Hueco-Mesilla Bolson Aquifer
High Plains aquifer system	Ogallala Aquifer



Figure 2. Principal or national aquifers in Texas

Data collection, field protocols, site selection, and well classification

TWDB's data collection procedures are in accordance with standardized field procedures consistent with the standards outlined in Appendix 5 of the Framework Document (SOGW, 2013). Water-level monitoring field procedures (<http://www.twdb.texas.gov/groundwater/docs/UMs/UM-52.pdf>) were revised during 2016 to adhere more closely to standards in the Framework Document, and sampling protocols are included in a separate manual (<http://www.twdb.texas.gov/groundwater/docs/UMs/UM-51.pdf?d=2974.485>). TWDB followed site selection criteria and the classification process when adding new sites as described in the final report for work performed under award number G15AC00465; description of the agency's existing networks are also reviewed in that final report.

2016-2017 TWDB National Ground Water Monitoring Network activities

The TWDB, as an existing provider, received an award under Cooperative Agreement Number G16AC00074 for June 2016 through September 2017 to maintain Network wells and web services. Web services providing water-quality, last updated in 2016, will be further modified under subsequent awards. This report describes the maintenance work to Network wells during 2017 and provides a summary of TWDB supported well data now existing in the Network. TWDB reviewed the nearly 1,400 existing sites in the Network existing in 2016 to determine which had been dropped from the state's programs and edited the Well Registry to change their status to Non-Display, chose replacement sites where feasible, and added sites when possible. Of the 1,414 TWDB wells now in the Network, 826 provide water-level data, including 125 trend wells (Appendix 1), and 588 provide water-quality data (Appendix 2).

- **Total number of wells in the water-level subnetwork remained nearly the same with 826 wells now in the Network (Table 2) compared to 820 at the end of 2016**

TWDB added wells in the Rio Grande alluvial aquifer measured by cooperators, including twelve surveillance and one trend well to the west of the Franklin Mountains considered completed in the Mesilla Bolson local aquifer. Six trend wells were added in the Edwards-Trinity aquifer system, and an additional 14 wells were selected to replace wells no longer measured in the Seymour aquifer and Coastal lowlands, Texas coastal uplands, and High Plains aquifer systems.

- **Cooperators continue to provide water-level data to the TWDB**

Cooperators, primarily groundwater conservation districts, measure levels in nearly 470 Network surveillance and trend wells, including 25 measured by the US Geological Survey.

- **Network wells in the western areas of the state are characterized by documented water-level changes where rainfall is lowest**

The median periods-of-record for these wells, ranging from 43 years in the High Plains aquifer system to 57 years in the Pecos River Basin alluvial aquifer, reflect changes from pre-development levels in many of the wells.

- **Well densities for total surveillance and trend wells range from 2.2 to 11.7 wells per 1,000 square miles, with higher densities in aquifers in the west**

Table 2. NGWMN water-level well summary

Principal Aquifer	Surveillance +Trend	Total WL wells	Background	Suspected Change	Documented Change	Aquifer coverage* (sq. mi.)	Total well density per 1,000 sq. mi.	Median period-of-record (years)
Coastal lowlands	77+15	92	27	5	60	41,879	2.2	52
Texas coastal uplands	83+14	97	37	12	48	36,595	2.7	46
Edwards-Trinity	123+67	190	21	37	133	71,116	2.7	45
Seymour	37+2	39	1	2	36	4,042	9.6	48
High Plains	341+20	361	0	0	361	36,515	9.9	43
Pecos River Basin	27+4	31	0	2	29	6,829	4.5	57
Rio Grande	14+2	16	0	0	16	1,370	11.7	52

*Aquifer coverage based on extent of TWDB major aquifers corresponding to principal aquifers, with greatest discrepancies in smaller footprints for the Rio Grande aquifer and Texas coastal uplands aquifer system

- Total number of sites in the water-quality subnetwork increased from 572 to 588**
 More sites in the Edwards-Trinity were added to the Network than in other aquifers.
- TWDB is responsible for the sampling and analysis of most sites in the water-quality subnetwork.**
 In addition to the TWDB’s planned sampling of representative wells (including Network wells) in the Carrizo-Wilcox major aquifer (Texas Coastal Uplands) during its upcoming 2018 sampling season, surveillance wells in the Pecos River and Rio Grande alluvial aquifers will be re-sampled to meet minimum frequency monitoring requirements.

Table 3. NGWMN water-quality well summary

Principal Aquifer	Surveillance	Background	Aquifer coverage** (sq. mi.)	Median period-of-record (years)	Surveillance well density per 1,000 sq. mi.
Coastal lowlands	105	105	41,879	23	2.5
Texas coastal uplands	107	107	36,595	29	2.9
Edwards-Trinity	201	201	71,116	21	2.8
Seymour	25	25	4,042	18	6.2
High Plains	124	125	36,515	20	3.4
Pecos River Basin	17	17	6,829	24	2.5
Rio Grande	9	9	1,370	27	6.6

**Aquifer coverage based on extent of TWDB major aquifers corresponding to principal aquifers, with greatest discrepancies in smaller footprints for the Rio Grande aquifer and Texas coastal uplands aquifer system

Brief discussions of well selections by principal aquifer are presented in following sections.

Coastal lowlands aquifer system

Of the 92 total wells selected for the NGWMN water-level subnetwork (Figure 3), the 15 wells monitored continuously and classified as trend remain operational since selected in previous years. The one well dropped from the network in Starr County was replaced by another in the same county with a 19-year period of measurement record. The median period-of-record for all wells is 52 years (Table 2). More than half the wells show documented changes (Table 2). Cooperating groundwater conservation districts and the USGS measure 21 and 20 of these wells, respectively, and provide these data to the TWDB. The longest period of measurement is 84 years in a well in Kleberg County first measured in 1932.

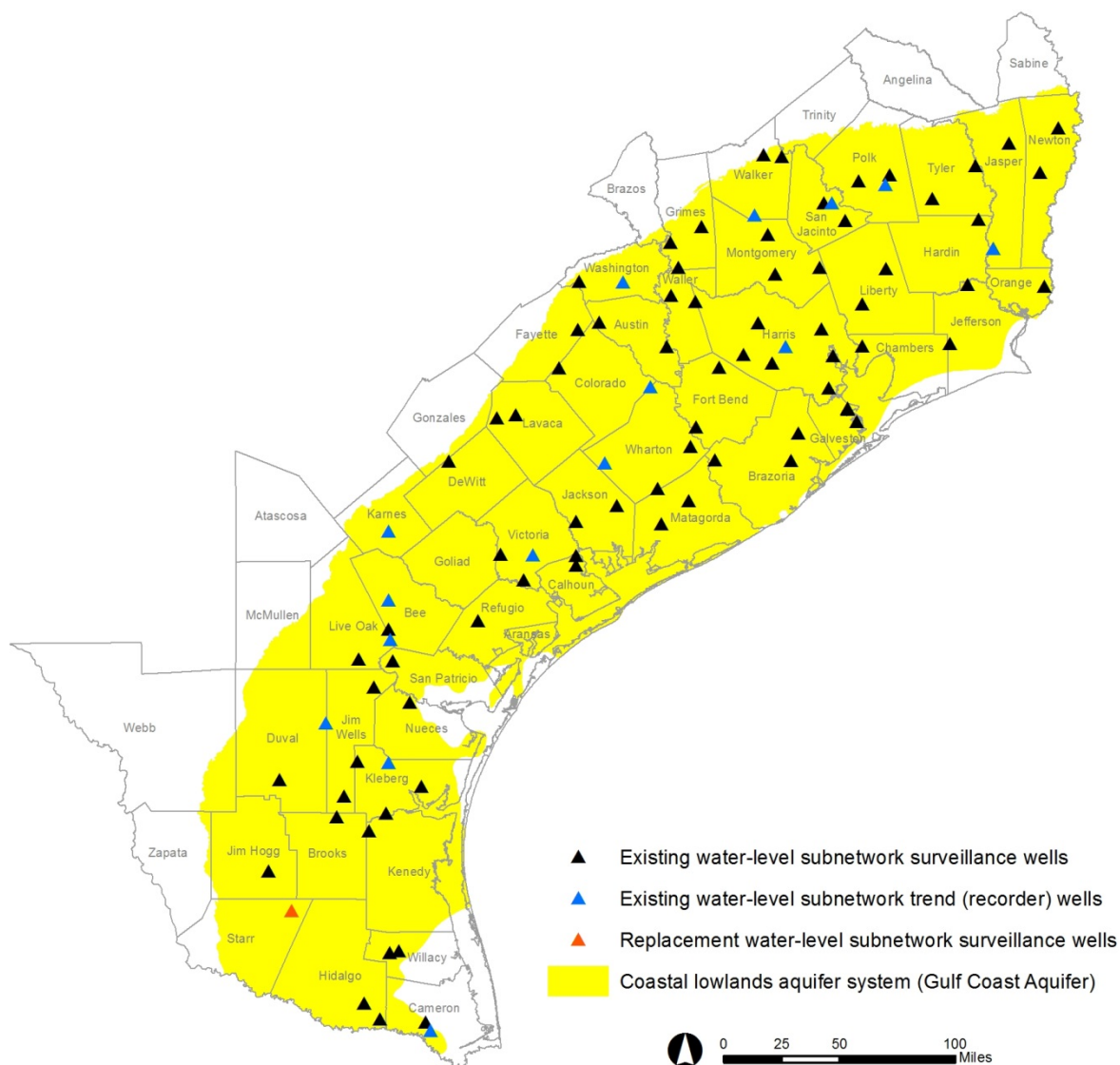


Figure 3. Wells with water-level measurements in the Coastal lowlands aquifer system selected by TWDB for the NGWMN.

The 105 wells selected by TWDB in the water-quality subnetwork (Figure 4) are all surveillance wells with a median period-of-record of 23 years (Table 3). The oldest analysis was from a sample collected in 1941 in Hidalgo County well #8724102.

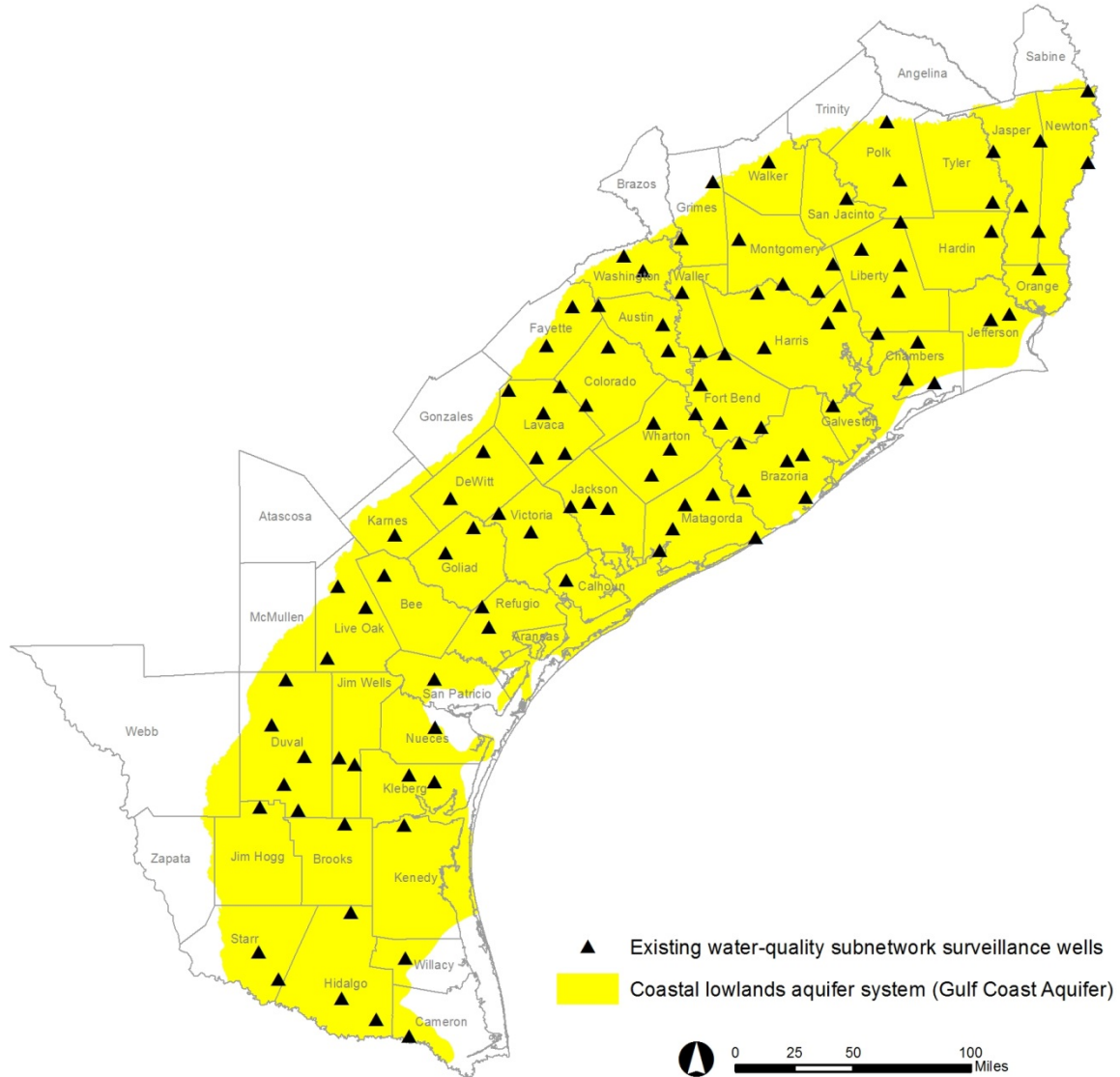


Figure 4. Wells with water-quality data in the Coastal lowlands aquifer system selected by TWDB for the NGWMN.

Texas coastal uplands aquifer system

Of the 83 wells in the water-level surveillance subnetwork in this aquifer, two replacement wells were added in Wilson and Zavala counties (Figure 5). The 14 continuously monitored wells classified as trend and selected in previous years remain operational, and the median period-of-record for all surveillance and trend wells is 46 years (Table 2). Close to 50 percent of the wells show documented changes (Table 2). Cooperating groundwater conservation districts measure depth-to-water in 20 surveillance wells and send data to the TWDB. The longest period of measurement is 87 years in a well in Dimmit County first measured in 1929.

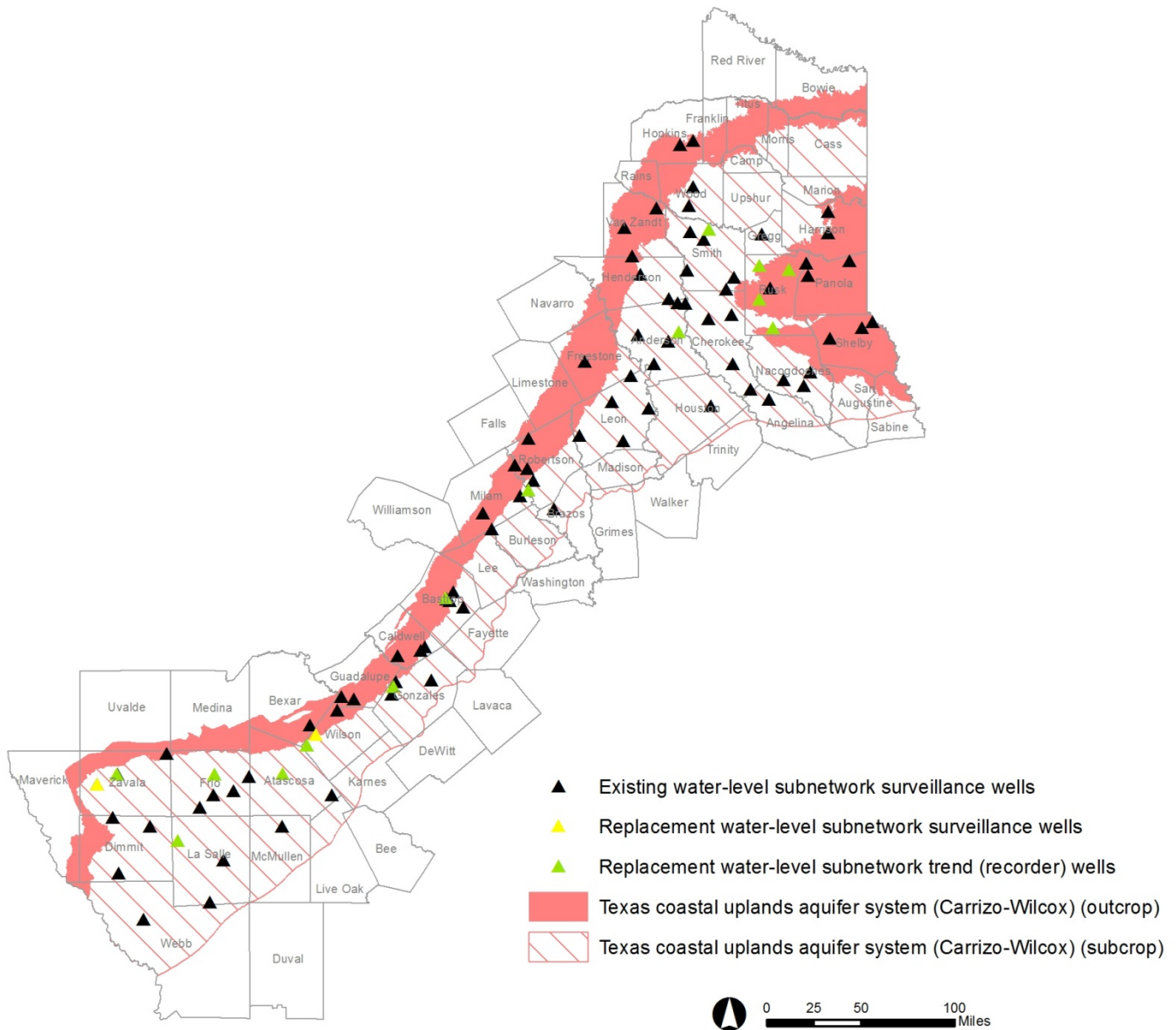


Figure 5. Wells with water-level measurements in the Texas coastal uplands aquifer system selected by TWDB for the NGWMN.

TWDB has selected 107 surveillance water-quality subnetwork wells, of which nine are replacement wells in Bowie, Camp, Angelina, Caldwell, Gonzales, Frio, Zavala, and Dimmit (Figure 6). The median period-of-record for these subnetwork wells is 29 years (Table 3), with the oldest sample collected in 1944 in Gonzales County well #6727201.

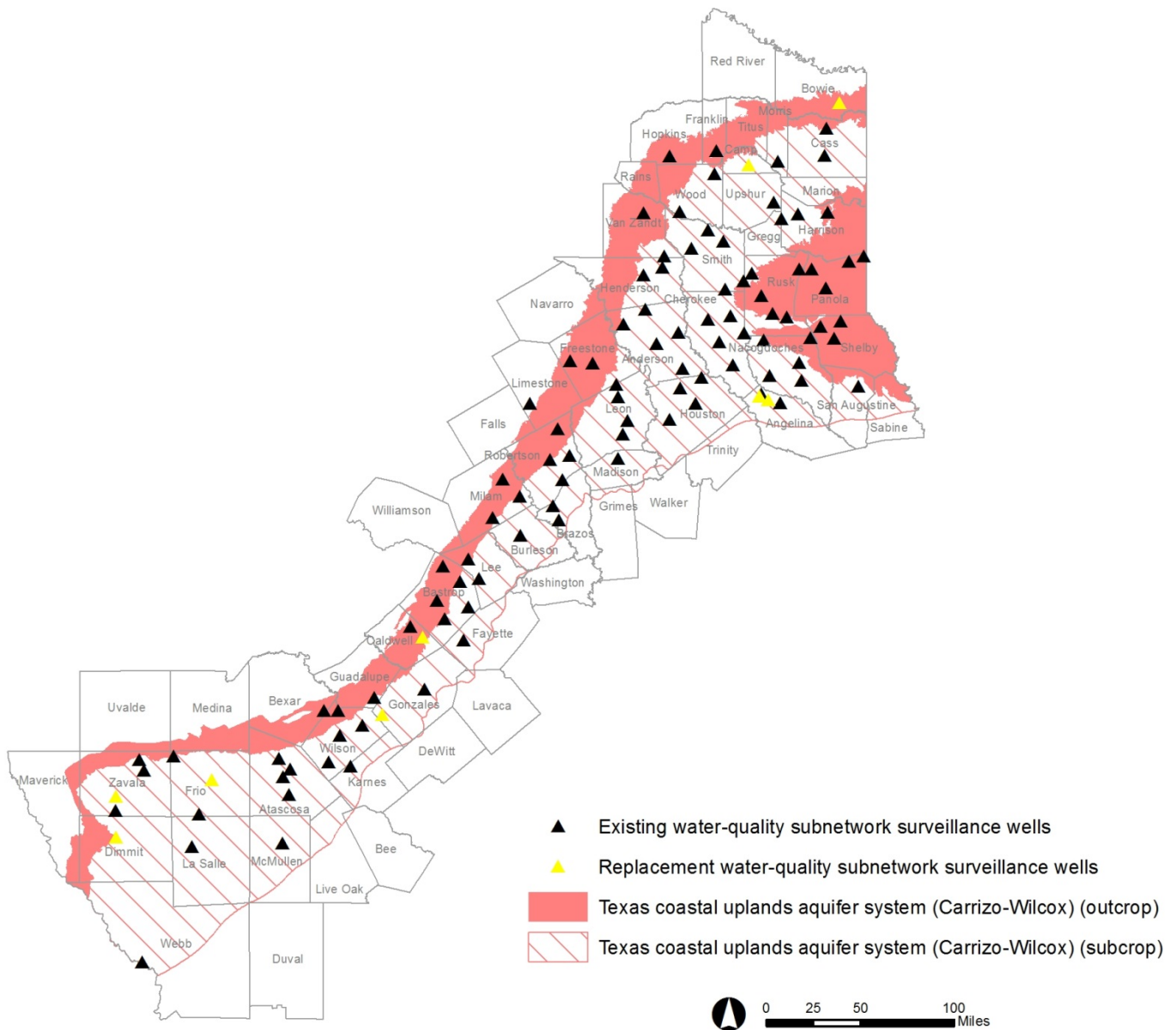


Figure 5. Wells with water-quality data in the Texas coastal uplands aquifer system selected by TWDB for the NGWMN.

Edwards-Trinity aquifer system

Of the 123 wells in the water-level surveillance subnetwork in this aquifer, four replacement wells were added in Johnson, McLennan, Gillespie, and Terrell counties (Figure 6). Of the 67 wells trend wells, five were added in Somervell, Ellis, and Hill counties in 2017. The median period-of-record for all surveillance and trend wells is 45 years (Table 2). Over 70 percent of the wells show documented changes, with 19 percent showing suspected or anticipated changes (Table 2). Cooperating groundwater conservation districts measure depth-to-water in 80 surveillance wells and send data to the TWDB. The longest period of measurement is 87 years in a well in Uvalde County first measured in 1929.

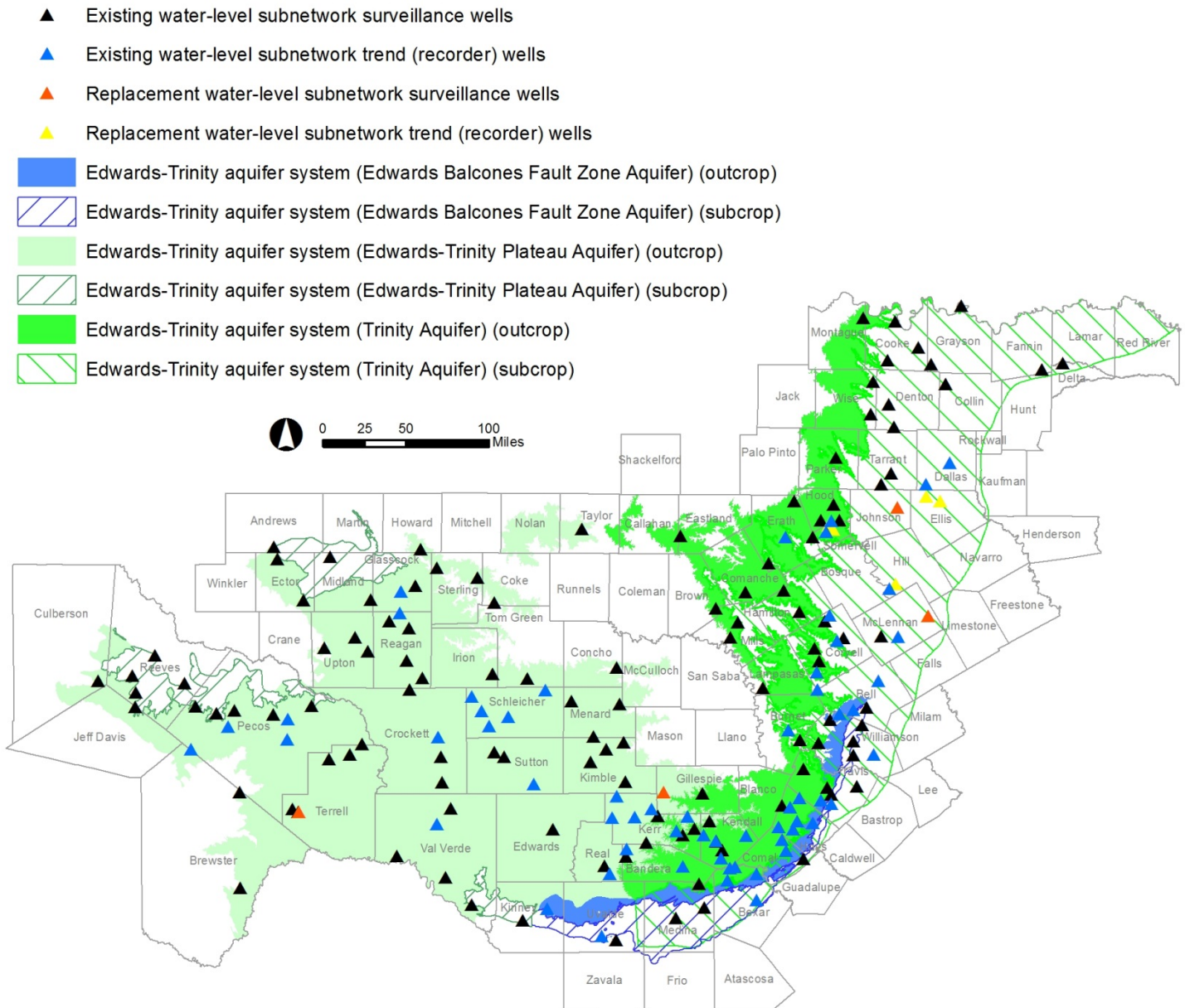


Figure 6. Wells with water-level measurements in the Edwards-Trinity aquifer system selected by TWDB for the NGWMN.

TWDB selected 201 surveillance water-quality subnetwork sites in the Edwards-Trinity aquifer system, of which 14 are springs. Thirty-two are replacement sites (Figure 7) chosen in 20 counties underlain by three major aquifers in Texas: the Trinity, Edwards (Balcones Fault Zone), and Edwards-Trinity (Plateau) aquifers. The median period-of-record for these subnetwork wells and springs is 21 years (Table 3), and the oldest water-quality analysis dates from Solomon Springs in Balmorhea State Park sampled in 1930 in Reeves County (#5202611).

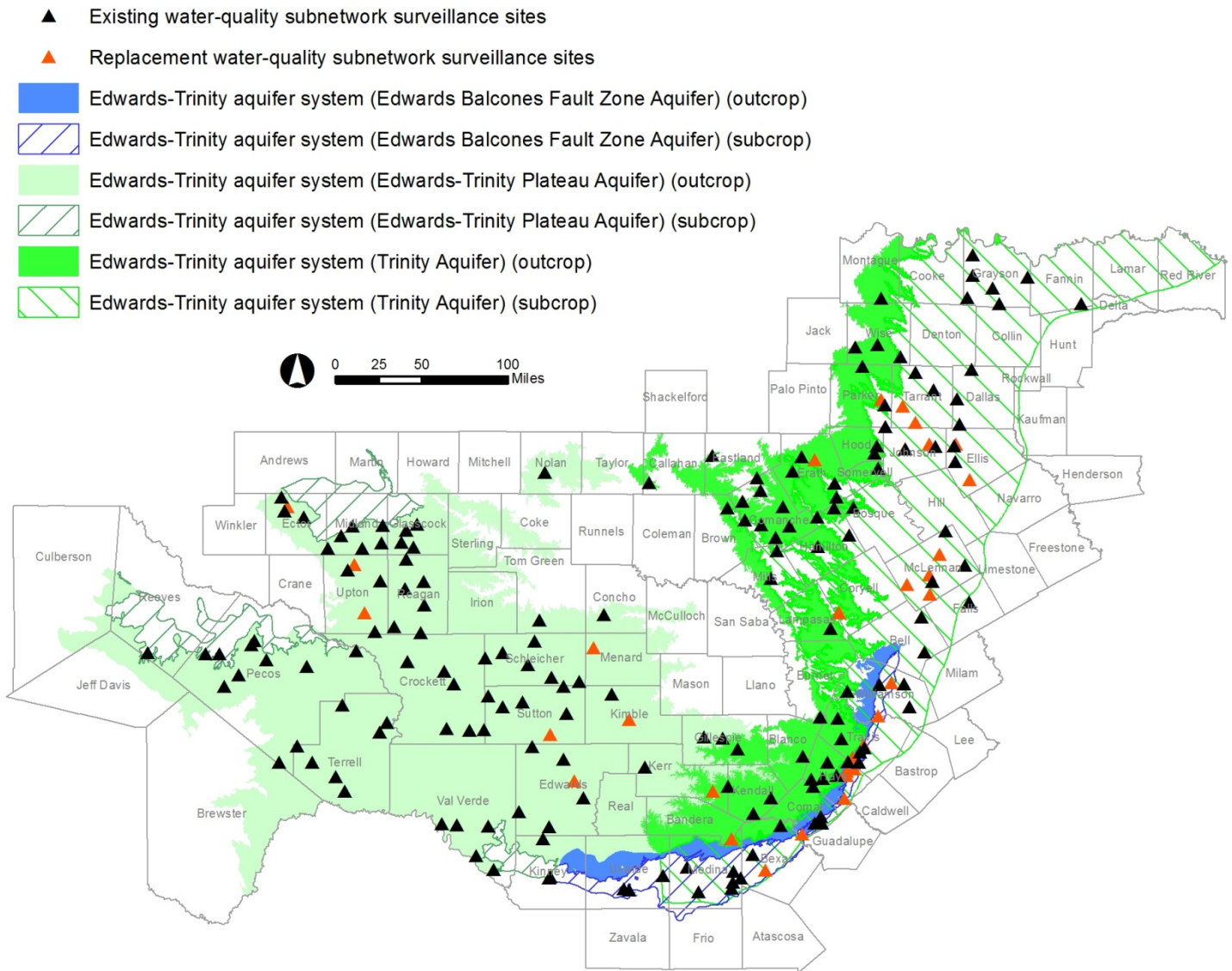


Figure 7. Wells and springs with water-quality data in the Edwards-Trinity aquifer system selected by TWDB for the NGWMN.

Seymour aquifer

Of the 39 wells selected for the water-level subnetwork, including two replacement wells in Haskell County (Figure 8), two are continuously monitored and classified as trend. Median period-of-record is 48 years for all wells (Table 2). Most (34) of the wells show documented changes (Table 2). Cooperating groundwater conservation districts measure depth-to-water in six wells and send data to the TWDB. The longest period of measurement is 69 years in a well in Childress County first measured in 1946.

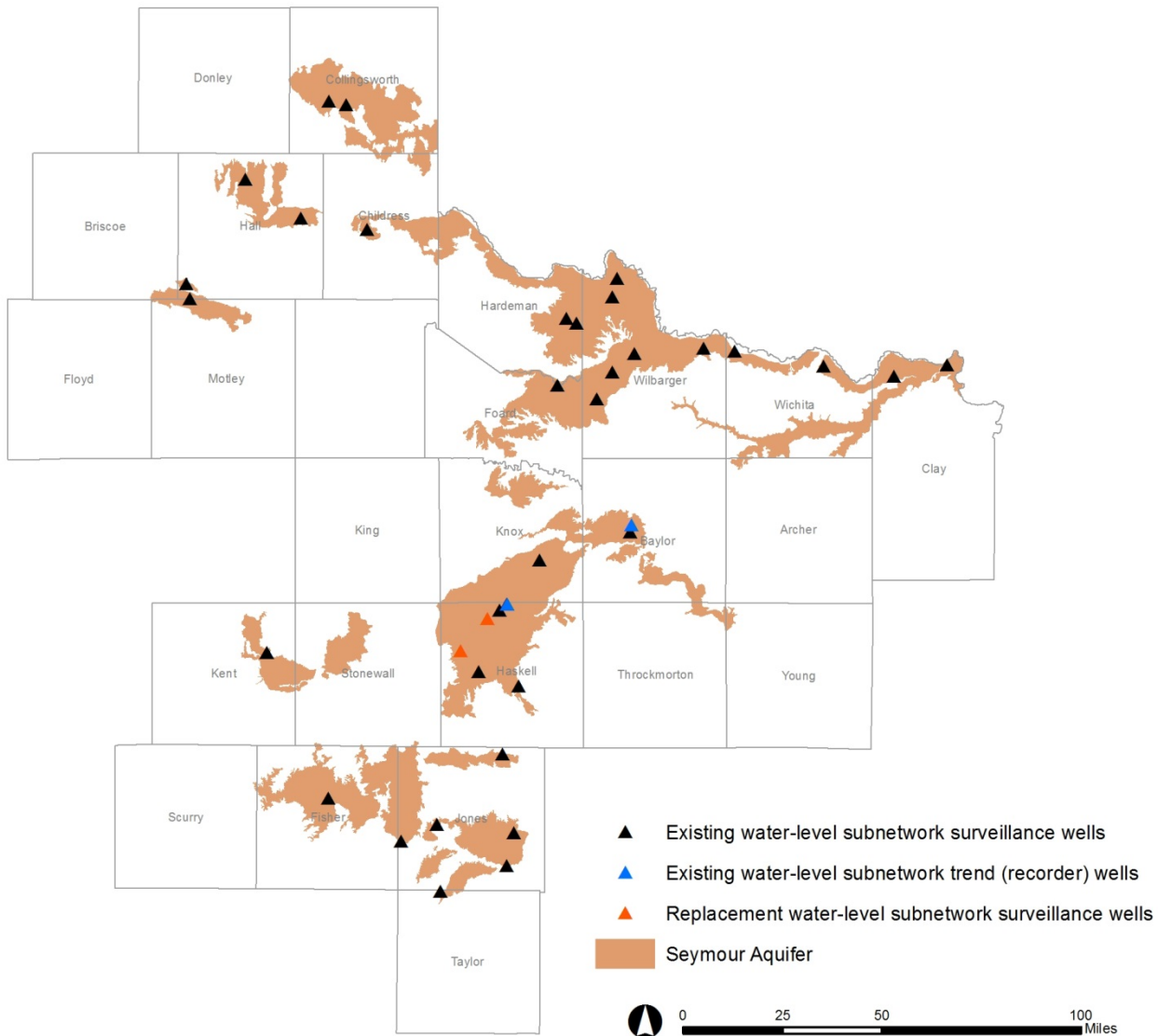


Figure 8. Wells with water-level measurements in the Seymour aquifer selected by TWDB for the NGWMN.

TWDB selected 25 surveillance wells in the aquifer (Figure 9) with a median period-of-record of 18 years for the NGWMN (Table 3). Knox County well #2127803 has the oldest analysis from a sample collected in 1936.

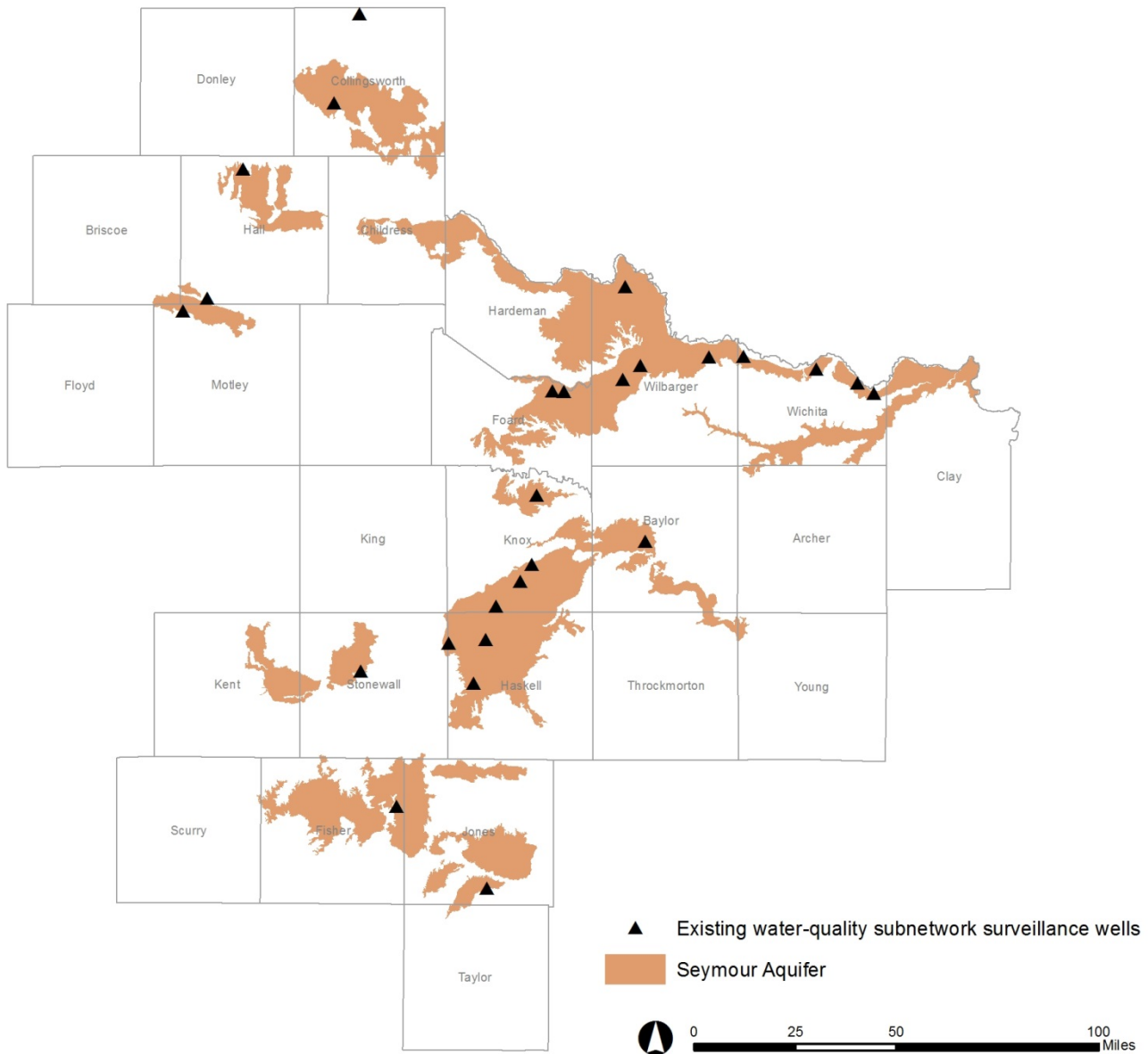


Figure 9. Wells with water-quality data in the Seymour aquifer selected by TWDB for the NGWMN.

High Plains aquifer system

Of the 341 wells selected (Figure 10) for the surveillance subnetwork, six wells are replacements in Ochiltree, Dallam, Hartley, Carson, and Gaines counties. Twenty wells are continuously monitored, and median period-of-record for the total 361 wells is 43 years (Table 2). All of the wells show documented changes (Table 2). Cooperating groundwater conservation districts measure depth-to-water in 305 wells and send data to the TWDB. The longest period of measurement is 101 years in a well in Hale County first measured in 1915.

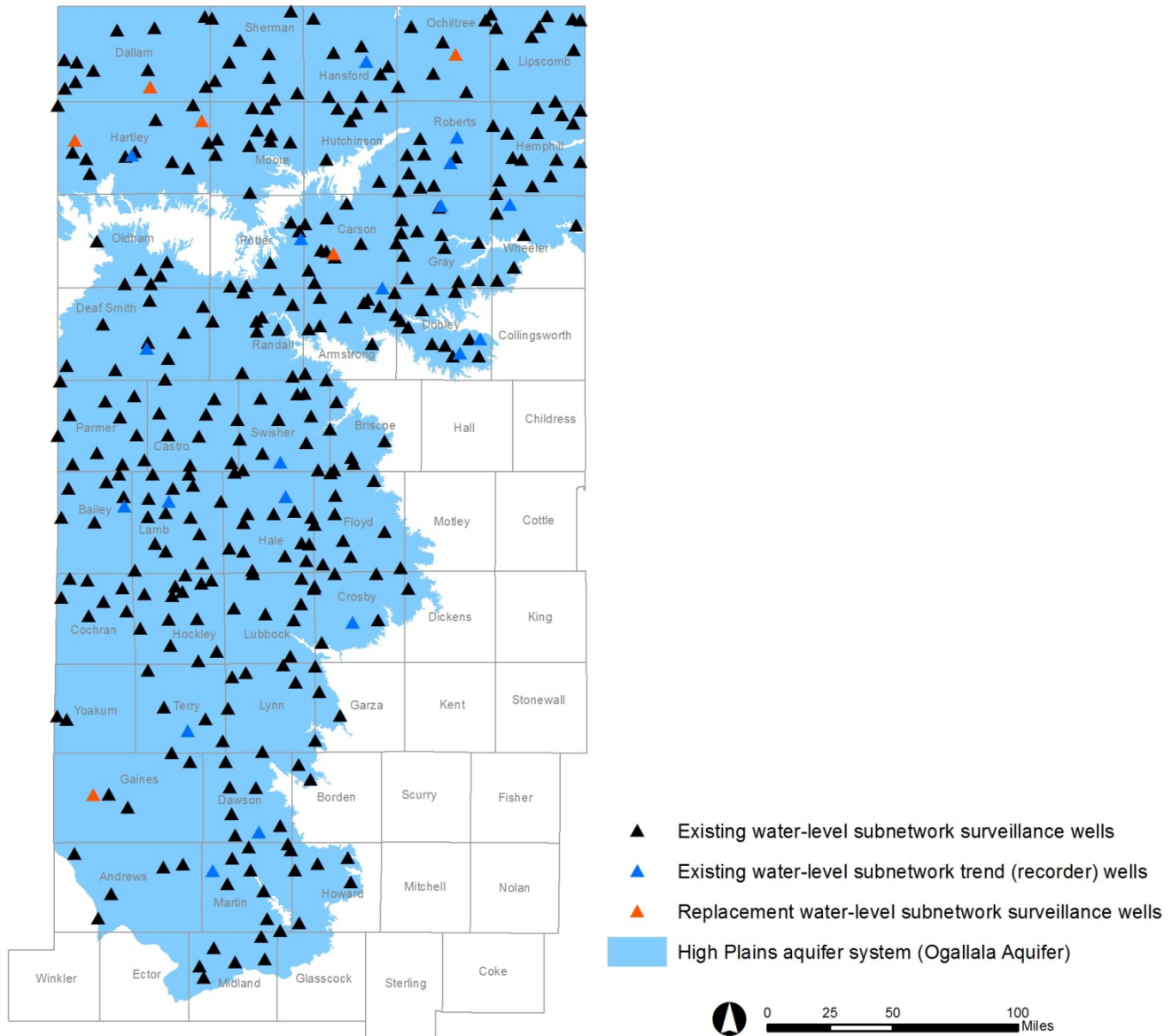


Figure 10. Wells with water-level measurements in the High Plains aquifer system selected by TWDB for the NGWMN.

TWDB selected 124 surveillance wells in the aquifer of which five, in Hansford, Hutchinson, and Carson counties, are replacements for wells dropped from the program (Figure 11). The median period-of-record is 20 years (Table 3), and Midland County well #4507602 has the oldest analysis from a sample collected in 1937.

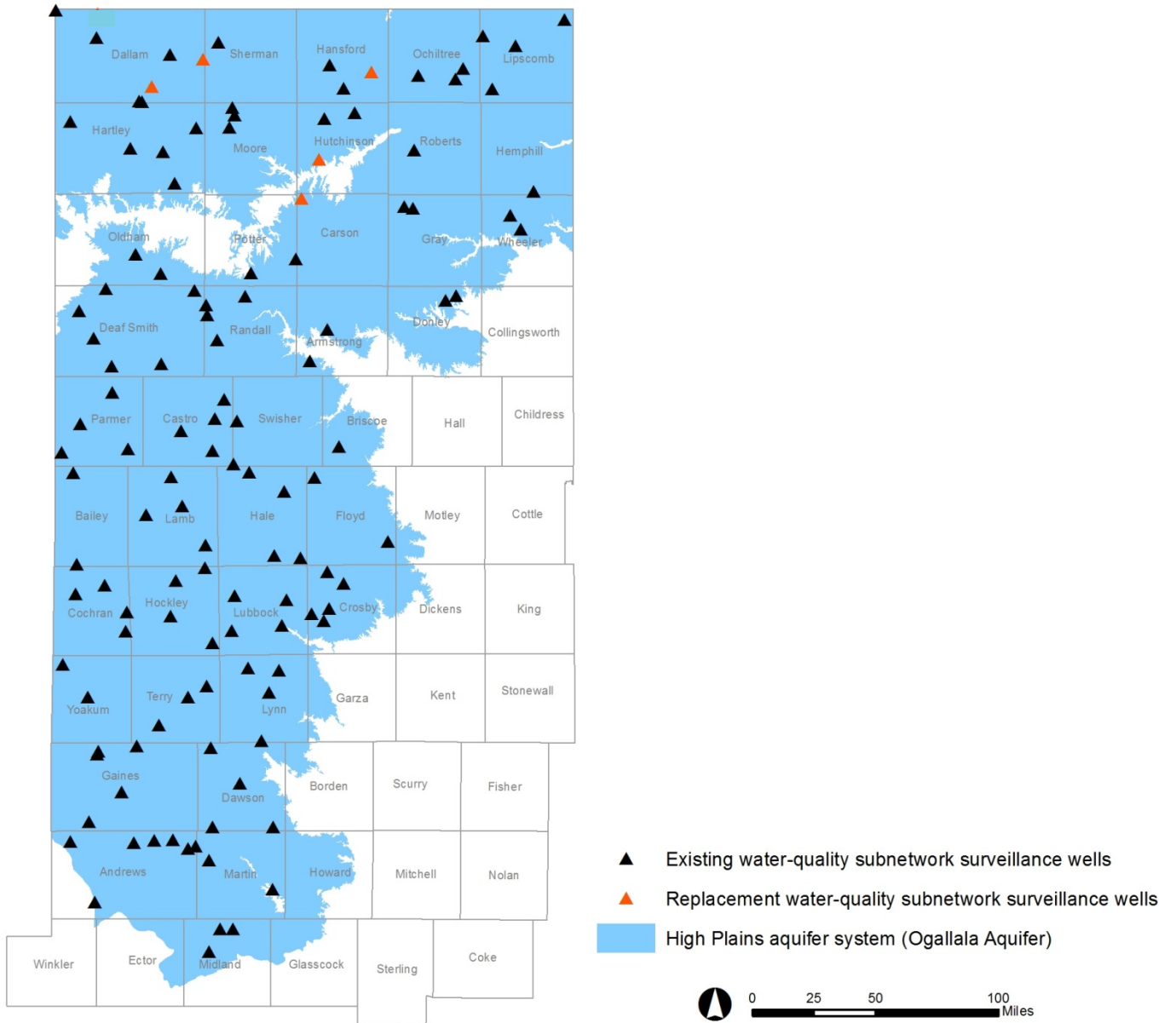


Figure 11. Wells with water-quality data in the High Plains aquifer system selected by TWDB for the NGWMN.

Pecos River Basin alluvial aquifer and Rio Grande aquifer system

Of the 31 total wells selected in the Pecos River Basin alluvial aquifer (Figure 12), four are continuously monitored and classified as trend; median period-of-record is 57 years (Table 2). Most of the wells (28) have documented changes (Table 2), and two have anticipated changes. Cooperating groundwater conservation districts measure depth-to-water in five wells and send data to the TWDB. The longest period of measurement is 76 years in a well in Loving County first measured in 1940.

Of the 16 total wells selected in the Rio Grande alluvial aquifer (Figure 12), two are continuously monitored and classified as trend; one trend and ten surveillance wells were added. Median period-of-record is 52 years (Table 2). All of the wells show documented changes (Table 2). The USGS and the El Paso Public Utility Board measure depth-to-water in nine wells and send data to the TWDB. The longest period of measurement is 64 years in a well in Hudspeth County well #4842701 first measured in 1953.

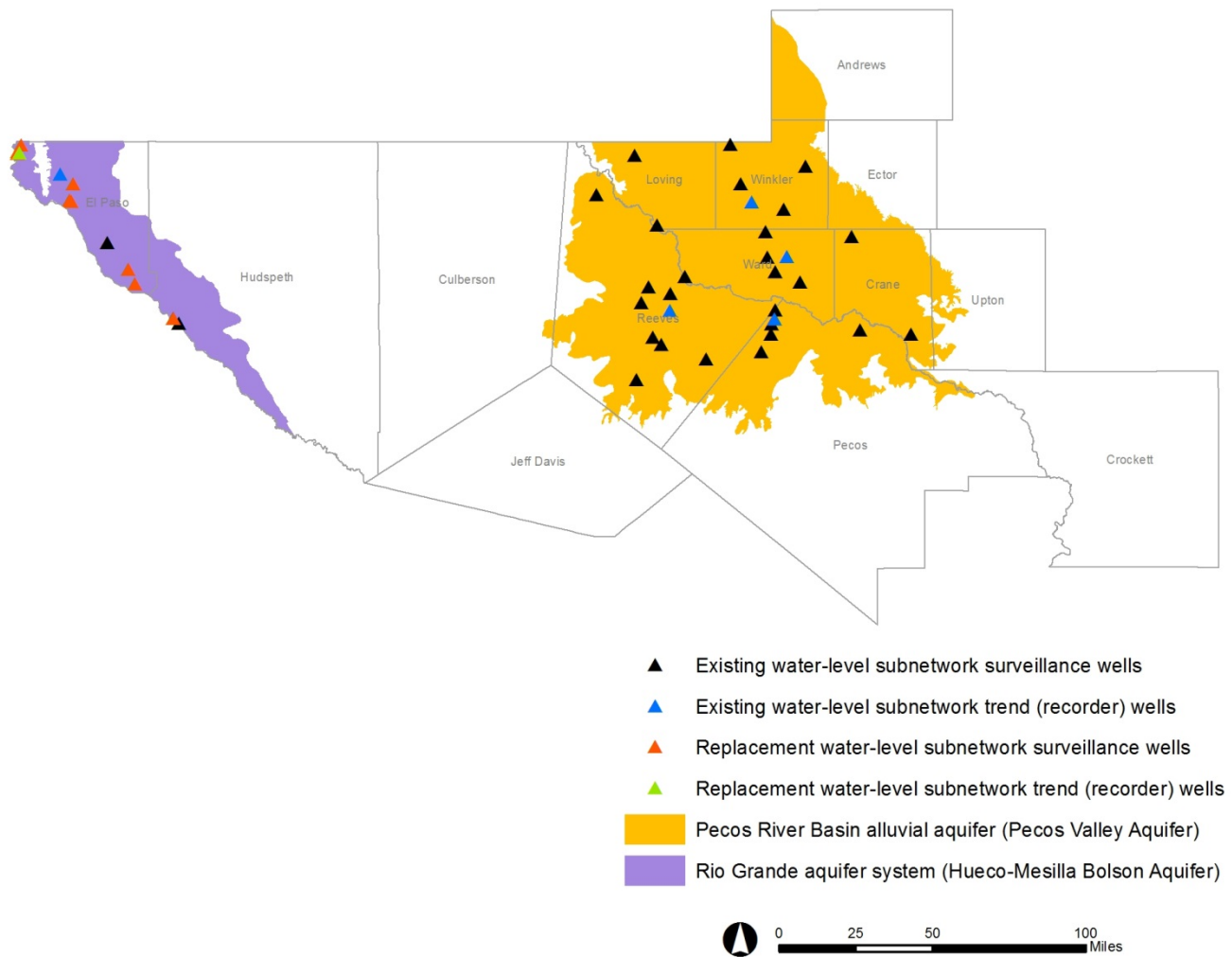


Figure 12. Wells with water-level measurements in the Pecos River Basin alluvial and Rio Grande aquifers selected by TWDB for the NGWMN.

TWDB selected 17 surveillance wells in the Pecos River Basin alluvial aquifer (Figure 13) with a median period-of-record of 24 years (Table 3). The oldest analysis is from Reeves County well #4642504 sampled in 1959. TWDB selected six additional surveillance wells in addition to the existing three in the Rio Grande aquifer (Figure 13, Table 3). Median period-of-record is 27 years, and El Paso County well #4923506 has the oldest analysis from a sample collected in 1961.

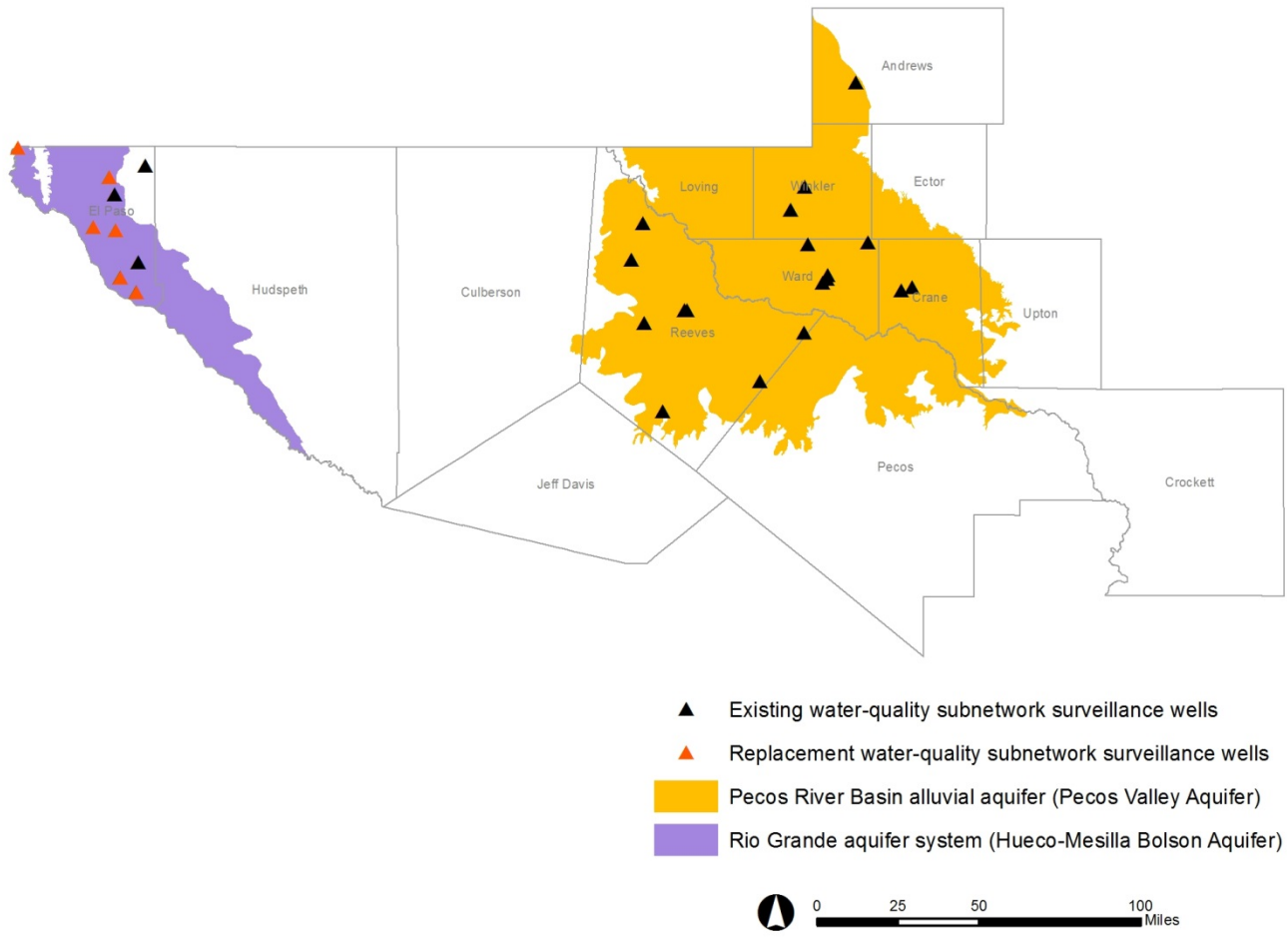


Figure 13. Wells with water-quality data in the Pecos River Basin alluvial and Rio Grande aquifers selected by TWDB for the NGWMN.

References

Texas Water Development Board Monitoring Sites in the National Ground-Water Monitoring Network, 2016, 129 p., https://cida.usgs.gov/ngwmn/doc/ProjectReports/TWDB_NewDataProvider_Report.pdf.

Subcommittee on Ground Water (SOGW), 2013, A National Framework for Ground-Water Monitoring in the United States, 182 p, https://acwi.gov/sogw/ngwmn_framework_report_july2013.pdf.

Appendix 1

TWDB wells with water-level data in the NGWMN

TWDB state well number	national aquifer	latitude	longitude	monitoring category	observation type	County
7934409	Coastal lowlands	28.4363889	-97.8488889	trend	GCD Recorder	Bee
8860415	Coastal lowlands	26.044722	-97.587778	trend	TWDB Recorder	Cameron
8415702	Coastal lowlands	27.758334	-98.241389	trend	TWDB Recorder	Duval
6514409	Coastal lowlands	29.817222	-95.369444	trend	TWDB Recorder	Harris
6148209	Coastal lowlands	30.3477778	-94.0705556	trend	TWDB Recorder	Jasper
7910406	Coastal lowlands	28.8122222	-97.85	trend	TWDB Recorder	Karnes
8326701	Coastal lowlands	27.538889	-97.846945	trend	TWDB Recorder	Kleberg
7950106	Coastal lowlands	28.2172222	-97.8386111	trend	GCD Recorder	Live Oak
6119417	Coastal lowlands	30.6930556	-94.7463889	trend	TWDB Recorder	Polk
6032219	Coastal lowlands	30.5947222	-95.0786111	trend	GCD Recorder	San Jacinto
8017502	Coastal lowlands	28.6841667	-96.9488889	trend	TWDB Recorder	Victoria
6028802	Coastal lowlands	30.528055	-95.563889	trend	Other Cooperator Recorder	Walker
5953915	Coastal lowlands	30.1663889	-96.3841667	trend	TWDB Recorder	Washington
6653406	Coastal lowlands	29.186111	-96.499445	trend	TWDB Recorder	Wharton
6631107	Coastal lowlands	29.598611	-96.214167	trend	GCD Recorder	Wharton
5951607	Coastal lowlands	30.1694444	-96.6591667	surveillance	TWDB Current Observation	Washington
5956301	Coastal lowlands	30.245834	-96.036667	surveillance	USGS Current Observation	Grimes
5964201	Coastal lowlands	30.0955556	-96.0822222	surveillance	TWDB Current Observation	Waller
6012301	Coastal lowlands	30.8530556	-95.5055556	surveillance	TWDB Current Observation	Walker
6013304	Coastal lowlands	30.8422222	-95.3916667	surveillance	TWDB Current Observation	Walker
6031317	Coastal lowlands	30.593334	-95.129167	surveillance	GCD Current Observation	San Jacinto
6033302	Coastal lowlands	30.466944	-95.895556	surveillance	USGS Current Observation	Grimes
6037402	Coastal lowlands	30.423055	-95.478611	surveillance	USGS Current Observation	Montgomery
6053208	Coastal lowlands	30.209445	-95.433055	surveillance	USGS Current Observation	Montgomery
6055313	Coastal lowlands	30.245	-95.158056	surveillance	USGS Current Observation	Montgomery
6057509	Coastal lowlands	30.0611111	-95.9313889	surveillance	TWDB Current Observation	Waller
6115501	Coastal lowlands	30.7925	-94.181111	surveillance	GCD Current Observation	Tyler
6117302	Coastal lowlands	30.711667	-94.913056	surveillance	GCD Current Observation	Polk
6119103	Coastal lowlands	30.745278	-94.720555	surveillance	GCD Current Observation	Polk
6129203	Coastal lowlands	30.617222	-94.451389	surveillance	GCD Current Observation	Tyler
6131901	Coastal lowlands	30.504723	-94.164167	surveillance	GCD Current Observation	Hardin
6148221	Coastal lowlands	30.347778	-94.070555	surveillance	GCD Current Observation	Jasper
6151111	Coastal lowlands	30.2394444	-94.7402778	surveillance	TWDB Current Observation	Liberty
6155707	Coastal lowlands	30.1533333	-94.2325	surveillance	TWDB Current Observation	Jefferson
6157611	Coastal lowlands	30.048611	-94.888611	surveillance	USGS Current Observation	Liberty
6201701	Coastal lowlands	30.912501	-93.975278	surveillance	GCD Current Observation	Jasper
6203301	Coastal lowlands	30.996389	-93.663889	surveillance	GCD Current Observation	Newton
6210901	Coastal lowlands	30.756389	-93.778611	surveillance	GCD Current Observation	Newton
6250911	Coastal lowlands	30.1452778	-93.7536111	surveillance	TWDB Current Observation	Orange
6409626	Coastal lowlands	29.8219444	-94.89	surveillance	TWDB Current Observation	Chambers
6414105	Coastal lowlands	29.8338889	-94.3419444	surveillance	TWDB Current Observation	Jefferson

6433101	Coastal lowlands	29.483611	-94.981944	surveillance	USGS Current Observation	Galveston
6433103	Coastal lowlands	29.478889	-94.980555	surveillance	USGS Current Observation	Galveston
6433804	Coastal lowlands	29.411112	-94.925555	surveillance	USGS Current Observation	Galveston
6504612	Coastal lowlands	29.9475	-95.540278	surveillance	USGS Current Observation	Harris
6507908	Coastal lowlands	29.913889	-95.145	surveillance	USGS Current Observation	Harris
6511914	Coastal lowlands	29.774444	-95.633055	surveillance	USGS Current Observation	Harris
6516814	Coastal lowlands	29.767222	-95.072222	surveillance	USGS Current Observation	Harris
6518609	Coastal lowlands	29.705556	-95.785	surveillance	USGS Current Observation	Fort Bend
6521229	Coastal lowlands	29.7275	-95.451389	surveillance	USGS Current Observation	Harris
6532104	Coastal lowlands	29.5925	-95.099722	surveillance	USGS Current Observation	Harris
6533803	Coastal lowlands	29.379722	-95.926944	surveillance	USGS Current Observation	Fort Bend
6541707	Coastal lowlands	29.276111	-95.964167	surveillance	TWDB Current Observation	Wharton
6546301	Coastal lowlands	29.348611	-95.288889	surveillance	USGS Current Observation	Brazoria
6550504	Coastal lowlands	29.203056	-95.811389	surveillance	USGS Current Observation	Brazoria
6554407	Coastal lowlands	29.200556	-95.335556	surveillance	USGS Current Observation	Brazoria
6603806	Coastal lowlands	29.911112	-96.666944	surveillance	TWDB Current Observation	Fayette
6604601	Coastal lowlands	29.9497222	-96.5344444	surveillance	TWDB Current Observation	Austin
6616407	Coastal lowlands	29.8163889	-96.1116667	surveillance	TWDB Current Observation	Austin
6618601	Coastal lowlands	29.701667	-96.781944	surveillance	TWDB Current Observation	Colorado
6663504	Coastal lowlands	29.047222	-96.167778	surveillance	TWDB Current Observation	Wharton
6739517	Coastal lowlands	29.430555	-97.17	surveillance	TWDB Current Observation	Lavaca
6740503	Coastal lowlands	29.4475	-97.055556	surveillance	TWDB Current Observation	Lavaca
6753401	Coastal lowlands	29.194445	-97.470833	surveillance	GCD Current Observation	DeWitt
7864301	Coastal lowlands	28.1097222	-98.0363889	surveillance	TWDB Current Observation	Live Oak
7923601	Coastal lowlands	28.685556	-97.149722	surveillance	GCD Current Observation	Victoria
7932602	Coastal lowlands	28.546667	-97.005556	surveillance	GCD Current Observation	Victoria
7942703	Coastal lowlands	28.2766667	-97.8483333	surveillance	TWDB Current Observation	Bee
7946601	Coastal lowlands	28.321944	-97.29	surveillance	GCD Current Observation	Refugio
7958201	Coastal lowlands	28.1016667	-97.8227778	surveillance	TWDB Current Observation	San Patricio
8005502	Coastal lowlands	28.951389	-96.423889	surveillance	GCD Current Observation	Jackson
8011201	Coastal lowlands	28.866944	-96.678333	surveillance	GCD Current Observation	Jackson
8015301	Coastal lowlands	28.853056	-96.144445	surveillance	GCD Current Observation	Matagorda
8019506	Coastal lowlands	28.6788889	-96.6788889	surveillance	TWDB Current Observation	Calhoun
8019802	Coastal lowlands	28.6269444	-96.6791667	surveillance	TWDB Current Observation	Calhoun
8101102	Coastal lowlands	28.98	-95.975278	surveillance	TWDB Current Observation	Matagorda
8301514	Coastal lowlands	27.9569444	-97.9408333	surveillance	TWDB Current Observation	Jim Wells
8311101	Coastal lowlands	27.8736111	-97.7163889	surveillance	TWDB Current Observation	Nueces
8335903	Coastal lowlands	27.406945	-97.644445	surveillance	TWDB Current Observation	Kleberg
8342701	Coastal lowlands	27.258334	-97.863334	surveillance	TWDB Current Observation	Kleberg
8349702	Coastal lowlands	27.162223	-97.971389	surveillance	TWDB Current Observation	Kenedy
8432501	Coastal lowlands	27.544722	-98.043889	surveillance	TWDB Current Observation	Kleberg
8436606	Coastal lowlands	27.445556	-98.528611	surveillance	TWDB Current Observation	Duval
8447313	Coastal lowlands	27.3530556	-98.1265389	surveillance	TWDB Current Observation	Jim Wells
8455204	Coastal lowlands	27.2388889	-98.1719444	surveillance	TWDB Current Observation	Brooks
8704402	Coastal lowlands	26.936111	-98.596111	surveillance	TWDB Current Observation	Jim Hogg
8721204	Coastal lowlands	26.7177778	-98.455	surveillance	TWDB Current Observation	Starr
8756604	Coastal lowlands	26.198334	-98.000834	surveillance	TWDB Current Observation	Hidalgo

8834101	Coastal lowlands	26.4808333	-97.8408333	surveillance	TWDB Current Observation	Willacy
8834301	Coastal lowlands	26.4919444	-97.7858333	surveillance	TWDB Current Observation	Willacy
8857301	Coastal lowlands	26.109445	-97.900834	surveillance	TWDB Current Observation	Hidalgo
8860101	Coastal lowlands	26.093056	-97.617778	surveillance	TWDB Current Observation	Cameron

TWDB state well number	national aquifer	latitude	longitude	monitoring category	observation type	County
3543906	Texas coastal uplands	32.271111	-94.646945	trend	GCD Recorder	Rusk
3558405	Texas coastal uplands	32.078611	-94.874167	trend	GCD Recorder	Rusk
3702905	Texas coastal uplands	31.893889	-94.770278	trend	GCD Recorder	Rusk
6727805	Texas coastal uplands	29.5144444	-97.6933333	trend	GCD Recorder	Gonzales
3430907	Texas coastal uplands	32.5316667	-95.2627778	trend	TWDB Recorder	Smith
3541604	Texas coastal uplands	32.298056	-94.875278	trend	TWDB Recorder	Rusk
3813106	Texas coastal uplands	31.8658333	-95.4963889	trend	TWDB Recorder	Anderson
5862208	Texas coastal uplands	30.1094444	-97.2947222	trend	TWDB Recorder	Bastrop
5911621	Texas coastal uplands	30.8252778	-96.6536111	trend	TWDB Recorder	Milam
6862104	Texas coastal uplands	29.121389	-98.362778	trend	TWDB Recorder	Wilson
7702509	Texas coastal uplands	28.924444	-99.825833	trend	TWDB Recorder	Zavala
7708511	Texas coastal uplands	28.925555	-99.073333	trend	TWDB Recorder	Frio
7738103	Texas coastal uplands	28.477222	-99.357223	trend	TWDB Recorder	La Salle
7804508	Texas coastal uplands	28.93	-98.549167	trend	TWDB Recorder	Atascosa
1761301	Texas coastal uplands	33.1102778	-95.3852778	surveillance	TWDB Current Observation	Hopkins
1761401	Texas coastal uplands	33.0811111	-95.4886111	surveillance	TWDB Current Observation	Hopkins
3413601	Texas coastal uplands	32.81	-95.3841667	surveillance	TWDB Current Observation	Wood
3419502	Texas coastal uplands	32.6733333	-95.6694444	surveillance	TWDB Current Observation	Van Zandt
3421501	Texas coastal uplands	32.6880556	-95.4188889	surveillance	TWDB Current Observation	Wood
3425604	Texas coastal uplands	32.5444444	-95.915	surveillance	TWDB Current Observation	Van Zandt
3429902	Texas coastal uplands	32.5172222	-95.4097222	surveillance	TWDB Current Observation	Smith
3438201	Texas coastal uplands	32.469722	-95.301667	surveillance	TWDB Current Observation	Smith
3442108	Texas coastal uplands	32.3602778	-95.855	surveillance	TWDB Current Observation	Van Zandt
3445803	Texas coastal uplands	32.2677778	-95.4325	surveillance	TWDB Current Observation	Smith
3450306	Texas coastal uplands	32.2405556	-95.7911111	surveillance	TWDB Current Observation	Henderson
3455903	Texas coastal uplands	32.1441667	-95.1286111	surveillance	TWDB Current Observation	Smith
3456207	Texas coastal uplands	32.22	-95.0694444	surveillance	TWDB Current Observation	Smith
3460503	Texas coastal uplands	32.0819444	-95.5730556	surveillance	TWDB Current Observation	Henderson
3460602	Texas coastal uplands	32.0555556	-95.5058333	surveillance	TWDB Current Observation	Anderson
3461501	Texas coastal uplands	32.0522222	-95.4447222	surveillance	TWDB Current Observation	Anderson
3522708	Texas coastal uplands	32.6505556	-94.3444444	surveillance	TWDB Current Observation	Harrison
3526706	Texas coastal uplands	32.5038889	-94.8544444	surveillance	TWDB Current Observation	Gregg
3530705	Texas coastal uplands	32.5097222	-94.3463889	surveillance	TWDB Current Observation	Harrison
3544601	Texas coastal uplands	32.314167	-94.512778	surveillance	TWDB Current Observation	Rusk
3547502	Texas coastal uplands	32.329722	-94.183055	surveillance	GCD Current Observation	Panola
3550801	Texas coastal uplands	32.150834	-94.793611	surveillance	TWDB Current Observation	Rusk
3552301	Texas coastal uplands	32.231111	-94.501667	surveillance	GCD Current Observation	Panola
3708604	Texas coastal uplands	31.931111	-94.001945	surveillance	TWDB Current Observation	Shelby
3708701	Texas coastal uplands	31.891389	-94.085834	surveillance	TWDB Current Observation	Shelby
3714501	Texas coastal uplands	31.822778	-94.330555	surveillance	TWDB Current Observation	Shelby

3727506	Texas coastal uplands	31.549167	-94.687778	surveillance	TWDB Current Observation	Nacogdoches
3728902	Texas coastal uplands	31.513334	-94.532222	surveillance	TWDB Current Observation	Nacogdoches
3729103	Texas coastal uplands	31.601112	-94.484722	surveillance	TWDB Current Observation	Nacogdoches
3733202	Texas coastal uplands	31.4880556	-94.9416667	surveillance	TWDB Current Observation	Cherokee
3734505	Texas coastal uplands	31.421389	-94.803334	surveillance	TWDB Current Observation	Angelina
3806603	Texas coastal uplands	31.9497222	-95.2669444	surveillance	TWDB Current Observation	Cherokee
3808105	Texas coastal uplands	31.9761111	-95.0905556	surveillance	TWDB Current Observation	Cherokee
3810205	Texas coastal uplands	31.8463889	-95.8088889	surveillance	TWDB Current Observation	Anderson
3812502	Texas coastal uplands	31.8052778	-95.5788889	surveillance	TWDB Current Observation	Anderson
3819802	Texas coastal uplands	31.6569444	-95.685	surveillance	TWDB Current Observation	Anderson
3824806	Texas coastal uplands	31.6561111	-95.0805556	surveillance	TWDB Current Observation	Cherokee
3826401	Texas coastal uplands	31.5797222	-95.8636111	surveillance	TWDB Current Observation	Leon
3839701	Texas coastal uplands	31.379167	-95.249445	surveillance	TWDB Current Observation	Houston
3843101	Texas coastal uplands	31.3638889	-95.7280556	surveillance	TWDB Current Observation	Leon
3849802	Texas coastal uplands	31.1497222	-95.9230556	surveillance	TWDB Current Observation	Leon
3923404	Texas coastal uplands	31.6722222	-96.22	surveillance	TWDB Current Observation	Freestone
3940906	Texas coastal uplands	31.4055556	-96.0105556	surveillance	TWDB Current Observation	Leon
3951911	Texas coastal uplands	31.165556	-96.655278	surveillance	GCD Current Observation	Robertson
3954602	Texas coastal uplands	31.1855556	-96.2616667	surveillance	TWDB Current Observation	Leon
5824610	Texas coastal uplands	30.671389	-97.004167	surveillance	GCD Current Observation	Milam
5855707	Texas coastal uplands	30.146667	-97.232222	surveillance	GCD Current Observation	Bastrop
5862304	Texas coastal uplands	30.101112	-97.284445	surveillance	GCD Current Observation	Bastrop
5862307	Texas coastal uplands	30.088889	-97.263889	surveillance	GCD Current Observation	Bastrop
5863606	Texas coastal uplands	30.045556	-97.157778	surveillance	GCD Current Observation	Bastrop
5902309	Texas coastal uplands	30.987778	-96.757778	surveillance	GCD Current Observation	Milam
5903304	Texas coastal uplands	30.965556	-96.661945	surveillance	GCD Current Observation	Robertson
5904701	Texas coastal uplands	30.885834	-96.619444	surveillance	GCD Current Observation	Robertson
5911703	Texas coastal uplands	30.787222	-96.716944	surveillance	GCD Current Observation	Milam
5921410	Texas coastal uplands	30.700278	-96.460001	surveillance	GCD Current Observation	Brazos
5925502	Texas coastal uplands	30.564723	-96.938334	surveillance	GCD Current Observation	Burleson
6713702	Texas coastal uplands	29.758056	-97.483055	surveillance	GCD Current Observation	Caldwell
6713805	Texas coastal uplands	29.781944	-97.453334	surveillance	GCD Current Observation	Caldwell
6719306	Texas coastal uplands	29.7202778	-97.665	surveillance	TWDB Current Observation	Caldwell
6727502	Texas coastal uplands	29.545556	-97.675833	surveillance	GCD Current Observation	Gonzales
6729602	Texas coastal uplands	29.558612	-97.404723	surveillance	GCD Current Observation	Gonzales
6733401	Texas coastal uplands	29.4311111	-97.9997222	surveillance	TWDB Current Observation	Guadalupe
6735201	Texas coastal uplands	29.462223	-97.706945	surveillance	GCD Current Observation	Gonzales
6840401	Texas coastal uplands	29.4477778	-98.095	surveillance	TWDB Current Observation	Guadalupe
6846702	Texas coastal uplands	29.255278	-98.3375	surveillance	TWDB Current Observation	Bexar
6847303	Texas coastal uplands	29.358056	-98.129167	surveillance	GCD Current Observation	Wilson
6854506	Texas coastal uplands	29.194167	-98.293889	Surveillance	GCD Current Observation	Wilson
6961525	Texas coastal uplands	29.064723	-99.443611	surveillance	TWDB Current Observation	Zavala
7702514	Texas coastal uplands	28.9275	-99.82	surveillance	TWDB Current Observation	Zavala
7709101	Texas coastal uplands	28.8566667	-99.9752778	Surveillance	TWDB Current Observation	Zavala
7709102	Texas coastal uplands	28.856667	-99.975278	surveillance	TWDB Current Observation	Zavala
7716801	Texas coastal uplands	28.785	-99.080833	surveillance	GCD Current Observation	Frio
7718704	Texas coastal uplands	28.633889	-99.856389	surveillance	TWDB Current Observation	Dimmit

7723513	Texas coastal uplands	28.702501	-99.186111	surveillance	GCD Current Observation	Frio
7728503	Texas coastal uplands	28.575555	-99.571389	surveillance	TWDB Current Observation	Dimmit
7742801	Texas coastal uplands	28.255556	-99.814723	surveillance	TWDB Current Observation	Dimmit
7748301	Texas coastal uplands	28.346111	-99.005834	surveillance	TWDB Current Observation	La Salle
7764401	Texas coastal uplands	28.060834	-99.108889	surveillance	TWDB Current Observation	La Salle
7802815	Texas coastal uplands	28.910001	-98.807223	surveillance	GCD Current Observation	Frio
7809503	Texas coastal uplands	28.815556	-98.9275	surveillance	GCD Current Observation	Frio
7815805	Texas coastal uplands	28.784445	-98.171667	surveillance	GCD Current Observation	Atascosa
7828501	Texas coastal uplands	28.574722	-98.555278	surveillance	TWDB Current Observation	McMullen
8504401	Texas coastal uplands	27.941945	-99.622778	surveillance	TWDB Current Observation	Webb

TWDB state well number	national aquifer	latitude	longitude	monitoring category	observation type	
2310401	Edwards-Trinity	33.829166	-101.848333	trend	TWDB Recorder	Hale
3155504	Edwards-Trinity	32.198333	-98.180554	trend	TWDB Recorder	Erath
3242604	Edwards-Trinity	32.319443	-97.781943	trend	TWDB Recorder	Hood
3242805	Edwards-Trinity	32.2864444	-97.8095833	trend	GCD Recorder	Somervell
3242906	Edwards-Trinity	32.2532222	-97.7641944	trend	GCD Recorder	Somervell
3250201	Edwards-Trinity	32.239166	-97.82861	trend	GCD Recorder	Somervell
3319101	Edwards-Trinity	32.746388	-96.750277	trend	TWDB Recorder	Dallas
3325202	Edwards-Trinity	32.588333	-96.956944	trend	TWDB Recorder	Dallas
3333203	Edwards-Trinity	32.4963889	-96.9533333	trend	GCD Recorder	Ellis
3334207	Edwards-Trinity	32.4664861	-96.8297778	trend	GCD Recorder	Ellis
4014602	Edwards-Trinity	31.818054	-97.277777	trend	GCD Recorder	Hill
4015102	Edwards-Trinity	31.8536667	-97.2180278	trend	GCD Recorder	Hill
4026201	Edwards-Trinity	31.618888	-97.799166	trend	TWDB Recorder	Coryell
4035404	Edwards-Trinity	31.432221	-97.73111	trend	TWDB Recorder	Coryell
4039204	Edwards-Trinity	31.461944	-97.19861	trend	TWDB Recorder	McLennan
4049601	Edwards-Trinity	31.198055	-97.91	trend	TWDB Recorder	Coryell
4054701	Edwards-Trinity	31.131666	-97.37361	trend	GCD Recorder	Bell
4057602	Edwards-Trinity	31.066666	-97.904166	trend	TWDB Recorder	Bell
4357905	Edwards-Trinity	31.013888	-100.915277	trend	GCD Recorder	Schleicher
4362607	Edwards-Trinity	31.064444	-100.274999	trend	GCD Recorder	Schleicher
4412611	Edwards-Trinity	31.795277	-101.535833	trend	TWDB Recorder	Glasscock
4420854	Edwards-Trinity	31.639166	-101.545277	trend	TWDB Recorder	Reagan
5216802	Edwards-Trinity	30.79111	-103.043055	trend	TWDB Recorder	Pecos
5230107	Edwards-Trinity	30.621388	-103.363888	trend	GCD Recorder	Pecos
5312301	Edwards-Trinity	30.844166	-102.521943	trend	GCD Recorder	Pecos
5320603	Edwards-Trinity	30.692777	-102.523888	trend	GCD Recorder	Pecos
5423106	Edwards-Trinity	30.713055	-101.213055	trend	TWDB Recorder	Crockett
5463401	Edwards-Trinity	30.057501	-101.222778	trend	TWDB Recorder	Val Verde
5502807	Edwards-Trinity	30.9075	-100.833054	trend	GCD Recorder	Schleicher
5510611	Edwards-Trinity	30.795277	-100.765833	trend	GCD Recorder	Schleicher
5512134	Edwards-Trinity	30.865	-100.595833	trend	TWDB Recorder	Schleicher
5545308	Edwards-Trinity	30.359444	-100.378888	trend	TWDB Recorder	Sutton
5643901	Edwards-Trinity	30.265	-99.654166	trend	GCD Recorder	Kerr
5654405	Edwards-Trinity	30.169721	-99.347499	trend	TWDB Recorder	Kerr

5659201	Edwards-Trinity	30.106388	-99.695555	trend	GCD Recorder	Kerr
5661101	Edwards-Trinity	30.106944	-99.494166	trend	GCD Recorder	Kerr
5663922	Edwards-Trinity	30.005555	-99.132777	trend	TWDB Recorder	Kerr
5664301	Edwards-Trinity	30.114444	-99.035555	trend	GCD Recorder	Kerr
5715901	Edwards-Trinity	30.762777	-98.153611	trend	GCD Recorder	Burnet
5748811	Edwards-Trinity	30.255277	-98.057777	trend	GCD Recorder	Hays
5755607	Edwards-Trinity	30.184444	-98.139166	trend	TWDB Recorder	Hays
5763705	Edwards-Trinity	30.034721	-98.241111	trend	TWDB Recorder	Hays
5764502	Edwards-Trinity	30.077499	-98.078332	trend	GCD Recorder	Hays
5764705	Edwards-Trinity	30.015833	-98.116943	trend	TWDB Recorder	Hays
5803701	Edwards-Trinity	30.884999	-97.710277	trend	GCD Recorder	Williamson
5803702	Edwards-Trinity	30.885555	-97.710277	trend	GCD Recorder	Williamson
5804702	Edwards-Trinity	30.916943	-97.591944	trend	TWDB Recorder	Bell
5829603	Edwards-Trinity	30.578888	-97.410833	trend	TWDB Recorder	Williamson
5850120	Edwards-Trinity	30.234999	-97.873054	trend	TWDB Recorder	Travis
5857502	Edwards-Trinity	30.066388	-97.944444	trend	GCD Recorder	Hays
5850301	Edwards-Trinity	30.210277	-97.781666	trend	GCD Recorder	Travis
6801314	Edwards-Trinity	29.972221	-98.894721	trend	TWDB Recorder	Kendall
6802609	Edwards-Trinity	29.929999	-98.788611	trend	TWDB Recorder	Kendall
6804312	Edwards-Trinity	29.970277	-98.525277	trend	TWDB Recorder	Kendall
6807407	Edwards-Trinity	29.937499	-98.209444	trend	TWDB Recorder	Comal
6811417	Edwards-Trinity	29.798333	-98.744721	trend	TWDB Recorder	Kendall
6815211	Edwards-Trinity	29.855555	-98.175277	trend	TWDB Recorder	Comal
6819208	Edwards-Trinity	29.721666	-98.667221	trend	TWDB Recorder	Bexar
6819806	Edwards-Trinity	29.631943	-98.686111	trend	GCD Recorder	Bexar
6820110	Edwards-Trinity	29.732499	-98.623888	trend	TWDB Recorder	Bexar
6821519	Edwards-Trinity	29.678054	-98.436944	trend	GCD Recorder	Bexar
6837203	Edwards-Trinity	29.479443	-98.431943	trend	GCD Recorder	Bexar
6912206	Edwards-Trinity	29.867777	-99.567221	trend	GCD Recorder	Bandera
6919401	Edwards-Trinity	29.680277	-99.715555	trend	TWDB Recorder	Real
6924225	Edwards-Trinity	29.734721	-99.074721	trend	TWDB Recorder	Bandera
6950302	Edwards-Trinity	29.208611	-99.783888	trend	GCD Recorder	Uvalde
7038902	Edwards-Trinity	29.413611	-100.261111	trend	TWDB Recorder	Kinney
1733501	Edwards-Trinity	33.426666	-95.946388	surveillance	TWDB Current Observation	Fannin
1734301	Edwards-Trinity	33.472221	-95.765833	surveillance	TWDB Current Observation	Delta
1803901	Edwards-Trinity	33.889166	-96.648611	surveillance	TWDB Current Observation	Grayson
1833301	Edwards-Trinity	33.466944	-96.913889	surveillance	TWDB Current Observation	Grayson
1842604	Edwards-Trinity	33.320832	-96.784999	surveillance	TWDB Current Observation	Collin
1912605	Edwards-Trinity	33.803888	-97.505277	surveillance	TWDB Current Observation	Montague
1915701	Edwards-Trinity	33.775832	-97.223611	surveillance	TWDB Current Observation	Cooke
1932302	Edwards-Trinity	33.586666	-97.024166	surveillance	TWDB Current Observation	Cooke
1938301	Edwards-Trinity	33.494721	-97.290277	surveillance	TWDB Current Observation	Cooke
1945301	Edwards-Trinity	33.339166	-97.415277	surveillance	TWDB Current Observation	Wise
1954605	Edwards-Trinity	33.172778	-97.282222	surveillance	TWDB Current Observation	Denton
1961201	Edwards-Trinity	33.103611	-97.438611	surveillance	GCD Current Observation	Wise
1963701	Edwards-Trinity	33.007777	-97.236944	surveillance	TWDB Current Observation	Denton
2751902	Edwards-Trinity	32.126388	-102.641666	surveillance	TWDB Current Observation	Andrews

2760701	Edwards-Trinity	32.036388	-102.6125	surveillance	TWDB Current Observation	Ector
2763601	Edwards-Trinity	32.054166	-102.153888	surveillance	TWDB Current Observation	Midland
2862102	Edwards-Trinity	32.108333	-101.363333	surveillance	GCD Current Observation	Howard
3041803	Edwards-Trinity	32.258055	-99.955555	surveillance	TWDB Current Observation	Taylor
3056103	Edwards-Trinity	32.208611	-99.095833	surveillance	TWDB Current Observation	Eastland
3140101	Edwards-Trinity	32.464722	-98.106666	surveillance	GCD Current Observation	Erath
3162803	Edwards-Trinity	32.008333	-98.326666	surveillance	GCD Current Observation	Erath
3211702	Edwards-Trinity	32.782221	-97.743055	surveillance	TWDB Current Observation	Parker
3222612	Edwards-Trinity	32.666944	-97.258889	surveillance	TWDB Current Observation	Tarrant
3230106	Edwards-Trinity	32.588055	-97.344999	surveillance	TWDB Current Observation	Tarrant
3234609	Edwards-Trinity	32.440833	-97.764166	surveillance	TWDB Current Observation	Hood
3239507	Edwards-Trinity	32.418611	-97.204723	surveillance	GCD Current Observation	Johnson
3242403	Edwards-Trinity	32.321388	-97.87111	surveillance	GCD Current Observation	Hood
3243406	Edwards-Trinity	32.321666	-97.711388	surveillance	TWDB Current Observation	Hood
3249501	Edwards-Trinity	32.200833	-97.942499	surveillance	GCD Current Observation	Erath
3925201	Edwards-Trinity	31.615	-96.9369444	surveillance	TWDB Current Observation	McLennan
4026401	Edwards-Trinity	31.575277	-97.838888	surveillance	GCD Current Observation	Coryell
4035502	Edwards-Trinity	31.449721	-97.673888	surveillance	GCD Current Observation	Coryell
4038101	Edwards-Trinity	31.465277	-97.347221	surveillance	TWDB Current Observation	McLennan
4041202	Edwards-Trinity	31.373888	-97.929166	surveillance	GCD Current Observation	Coryell
4041903	Edwards-Trinity	31.277777	-97.888888	surveillance	GCD Current Observation	Coryell
4112902	Edwards-Trinity	31.789999	-98.53111	surveillance	GCD Current Observation	Comanche
4115501	Edwards-Trinity	31.806111	-98.194166	surveillance	TWDB Current Observation	Hamilton
4118650	Edwards-Trinity	31.670554	-98.785833	surveillance	TWDB Current Observation	Brown
4124801	Edwards-Trinity	31.647499	-98.058055	surveillance	TWDB Current Observation	Hamilton
4128401	Edwards-Trinity	31.569166	-98.59611	surveillance	TWDB Current Observation	Mills
4135602	Edwards-Trinity	31.454444	-98.6625	surveillance	TWDB Current Observation	Mills
4161601	Edwards-Trinity	31.078888	-98.377777	surveillance	TWDB Current Observation	Lampasas
4251303	Edwards-Trinity	31.231111	-99.655001	surveillance	GCD Current Observation	Concho
4302707	Edwards-Trinity	31.901388	-100.868888	surveillance	GCD Current Observation	Sterling
4319104	Edwards-Trinity	31.715555	-100.722777	surveillance	TWDB Current Observation	Coke
4351401	Edwards-Trinity	31.185555	-100.736388	surveillance	GCD Current Observation	Irion
4353801	Edwards-Trinity	31.148055	-100.432499	surveillance	GCD Current Observation	Tom Green
4407104	Edwards-Trinity	31.970833	-101.223333	surveillance	GCD Current Observation	Sterling
4413321	Edwards-Trinity	31.839444	-101.406666	surveillance	GCD Current Observation	Glasscock
4418214	Edwards-Trinity	31.733888	-101.796388	surveillance	TWDB Current Observation	Midland
4427623	Edwards-Trinity	31.575832	-101.634166	surveillance	GCD Current Observation	Reagan
4429705	Edwards-Trinity	31.524721	-101.463333	surveillance	TWDB Current Observation	Reagan
4433501	Edwards-Trinity	31.456388	-101.936666	surveillance	TWDB Current Observation	Upton
4442211	Edwards-Trinity	31.350834	-101.822222	surveillance	TWDB Current Observation	Upton
4445702	Edwards-Trinity	31.282499	-101.48611	surveillance	TWDB Current Observation	Reagan
4454702	Edwards-Trinity	31.153055	-101.347499	surveillance	TWDB Current Observation	Reagan
4461403	Edwards-Trinity	31.066111	-101.461388	surveillance	GCD Current Observation	Crockett
4521304	Edwards-Trinity	31.732221	-102.382499	surveillance	TWDB Current Observation	Ector
4539803	Edwards-Trinity	31.377778	-102.202501	surveillance	TWDB Current Observation	Upton
4643501	Edwards-Trinity	31.320555	-103.678889	surveillance	TWDB Current Observation	Reeves
4650402	Edwards-Trinity	31.169999	-103.874721	surveillance	TWDB Current Observation	Reeves

4658402	Edwards-Trinity	31.043334	-103.844722	surveillance	TWDB Current Observation	Reeves
4661201	Edwards-Trinity	31.112777	-103.422499	surveillance	TWDB Current Observation	Reeves
4755802	Edwards-Trinity	31.130832	-104.177221	surveillance	TWDB Current Observation	Culberson
5202401	Edwards-Trinity	30.936944	-103.8525	surveillance	TWDB Current Observation	Jeff Davis
5206501	Edwards-Trinity	30.941667	-103.323611	surveillance	GCD Current Observation	Pecos
5207901	Edwards-Trinity	30.888056	-103.143889	surveillance	GCD Current Observation	Pecos
5301707	Edwards-Trinity	30.908889	-102.988056	surveillance	GCD Current Observation	Pecos
5303901	Edwards-Trinity	30.878333	-102.648889	surveillance	GCD Current Observation	Pecos
5306501	Edwards-Trinity	30.945833	-102.315277	surveillance	GCD Current Observation	Pecos
5331601	Edwards-Trinity	30.545	-102.162778	surveillance	TWDB Current Observation	Terrell
5341501	Edwards-Trinity	30.298334	-102.941667	surveillance	GCD Current Observation	Brewster
5353401	Edwards-Trinity	30.171388	-102.478054	surveillance	TWDB Current Observation	Terrell
5353804	Edwards-Trinity	30.1472222	-102.4272222	surveillance	TWDB Current Observation	Terrell
5353809	Edwards-Trinity	30.146945	-102.429722	surveillance	TWDB Current Observation	Terrell
5418703	Edwards-Trinity	30.659445	-101.8725	surveillance	GCD Current Observation	Pecos
5425401	Edwards-Trinity	30.579722	-101.977778	surveillance	TWDB Current Observation	Terrell
5431504	Edwards-Trinity	30.561388	-101.18611	surveillance	GCD Current Observation	Crockett
5447205	Edwards-Trinity	30.37111	-101.173888	surveillance	GCD Current Observation	Crockett
5456403	Edwards-Trinity	30.173333	-101.0975	surveillance	TWDB Current Observation	Val Verde
5508204	Edwards-Trinity	30.978611	-100.048611	surveillance	GCD Current Observation	Menard
5527108	Edwards-Trinity	30.596388	-100.718332	surveillance	TWDB Current Observation	Sutton
5527616	Edwards-Trinity	30.561111	-100.634444	surveillance	GCD Current Observation	Sutton
5563803	Edwards-Trinity	30.018332	-100.207777	surveillance	TWDB Current Observation	Edwards
5603302	Edwards-Trinity	30.959722	-99.628054	surveillance	GCD Current Observation	Menard
5618104	Edwards-Trinity	30.713334	-99.857778	surveillance	GCD Current Observation	Menard
5620411	Edwards-Trinity	30.670555	-99.594722	surveillance	GCD Current Observation	Kimble
5625906	Edwards-Trinity	30.52361	-99.881388	surveillance	GCD Current Observation	Kimble
5627101	Edwards-Trinity	30.618611	-99.744722	surveillance	GCD Current Observation	Kimble
5644203	Edwards-Trinity	30.374444	-99.577778	surveillance	GCD Current Observation	Kimble
5647406	Edwards-Trinity	30.2975	-99.244167	surveillance	GCD Current Observation	Gillespie
5662205	Edwards-Trinity	30.118333	-99.296389	surveillance	GCD Current Observation	Kerr
5724503	Edwards-Trinity	30.688056	-98.055556	surveillance	GCD Current Observation	Burnet
5740304	Edwards-Trinity	30.472221	-98.022221	surveillance	TWDB Current Observation	Travis
5741903	Edwards-Trinity	30.287221	-98.9025	surveillance	GCD Current Observation	Gillespie
5755401	Edwards-Trinity	30.19611	-98.2125	surveillance	GCD Current Observation	Hays
5757703	Edwards-Trinity	30.019721	-98.973054	surveillance	GCD Current Observation	Kerr
5758402	Edwards-Trinity	30.076943	-98.842499	surveillance	GCD Current Observation	Kendall
5805403	Edwards-Trinity	30.933054	-97.471666	surveillance	TWDB Current Observation	Bell
5810303	Edwards-Trinity	30.841388	-97.791388	surveillance	TWDB Current Observation	Williamson
5812603	Edwards-Trinity	30.803611	-97.515555	surveillance	TWDB Current Observation	Williamson
5817902	Edwards-Trinity	30.666111	-97.892777	surveillance	TWDB Current Observation	Williamson
5820403	Edwards-Trinity	30.681943	-97.587499	surveillance	TWDB Current Observation	Williamson
5828401	Edwards-Trinity	30.575832	-97.589444	surveillance	TWDB Current Observation	Williamson
5842502	Edwards-Trinity	30.33111	-97.818054	surveillance	TWDB Current Observation	Travis
5842925	Edwards-Trinity	30.2775	-97.782778	surveillance	TWDB Current Observation	Travis
5844204	Edwards-Trinity	30.341111	-97.561389	surveillance	TWDB Current Observation	Travis
6802608	Edwards-Trinity	29.924999	-98.781943	surveillance	TWDB Current Observation	Kendall

6811103	Edwards-Trinity	29.858611	-98.73361	surveillance	TWDB Current Observation	Kendall
6816602	Edwards-Trinity	29.794166	-98.024166	surveillance	TWDB Current Observation	Comal
6825203	Edwards-Trinity	29.603888	-98.937499	surveillance	GCD Current Observation	Bandera
6833604	Edwards-Trinity	29.422221	-98.88861	surveillance	TWDB Current Observation	Medina
6905901	Edwards-Trinity	29.916389	-99.395556	surveillance	GCD Current Observation	Kerr
6908201	Edwards-Trinity	29.974721	-99.07611	surveillance	GCD Current Observation	Kerr
6912501	Edwards-Trinity	29.811388	-99.574721	surveillance	GCD Current Observation	Bandera
6918303	Edwards-Trinity	29.739999	-99.761388	surveillance	TWDB Current Observation	Real
6947306	Edwards-Trinity	29.34611	-99.139166	surveillance	GCD Current Observation	Medina
6951602	Edwards-Trinity	29.175832	-99.660555	surveillance	TWDB Current Observation	Uvalde
7033604	Edwards-Trinity	29.4475	-100.916944	surveillance	TWDB Current Observation	Val Verde
7045401	Edwards-Trinity	29.325277	-100.471388	surveillance	TWDB Current Observation	Kinney
7112502	Edwards-Trinity	29.814445	-101.571111	surveillance	TWDB Current Observation	Val Verde
7123901	Edwards-Trinity	29.654723	-101.145	surveillance	TWDB Current Observation	Val Verde
7225502	Edwards-Trinity	29.575278	-102.936111	surveillance	TWDB Current Observation	Brewster
TWDB state				monitoring		
well number	national aquifer	latitude	longitude	category	observation type	County
2122850	Seymour	33.6319444	-99.2966667	trend	TWDB Recorder	Baylor
2135748	Seymour	33.3913889	-99.7491667	trend	TWDB Recorder	Haskell
1205911	Seymour	34.903334	-100.397222	surveillance	GCD Current Observation	Collingsworth
1206707	Seymour	34.893334	-100.334167	surveillance	GCD Current Observation	Collingsworth
1219514	Seymour	34.6711111	-100.7	surveillance	TWDB Current Observation	Hall
1229403	Seymour	34.5552778	-100.4991667	surveillance	TWDB Current Observation	Hall
1230916	Seymour	34.5216667	-100.2572222	surveillance	TWDB Current Observation	Childress
1241302	Seymour	34.3575	-100.915	surveillance	TWDB Current Observation	Hall
1241604	Seymour	34.3127778	-100.9016667	surveillance	TWDB Current Observation	Motley
1338701	Seymour	34.375	-99.3491667	surveillance	TWDB Current Observation	Wilbarger
1344905	Seymour	34.2543056	-99.5333333	surveillance	TWDB Current Observation	Hardeman
1346402	Seymour	34.3180556	-99.3663889	surveillance	TWDB Current Observation	Wilbarger
1353102	Seymour	34.2393028	-99.4965	surveillance	TWDB Current Observation	Hardeman
1354905	Seymour	34.1480556	-99.2866667	surveillance	TWDB Current Observation	Wilbarger
1356901	Seymour	34.165	-99.0352778	surveillance	TWDB Current Observation	Wilbarger
1360503	Seymour	34.0533333	-99.5669444	surveillance	TWDB Current Observation	Foard
1361813	Seymour	34.0119444	-99.4238889	surveillance	TWDB Current Observation	Wilbarger
1362115	Seymour	34.0936111	-99.3675	surveillance	TWDB Current Observation	Wilbarger
1449806	Seymour	34.1555556	-98.9233333	surveillance	TWDB Current Observation	Wichita
1460101	Seymour	34.1102778	-98.5997222	surveillance	TWDB Current Observation	Wichita
1462401	Seymour	34.0794444	-98.3430556	surveillance	TWDB Current Observation	Clay
1463301	Seymour	34.115	-98.1508333	surveillance	TWDB Current Observation	Clay
2127904	Seymour	33.526389	-99.631944	surveillance	GCD Current Observation	Knox
2130202	Seymour	33.610834	-99.303056	surveillance	GCD Current Observation	Baylor
2135702	Seymour	33.391945	-99.749722	surveillance	GCD Current Observation	Haskell
2141818	Seymour	33.250001	-99.918333	surveillance	GCD Current Observation	Haskell
2142258	Seymour	33.3475	-99.820833	surveillance	GCD Current Observation	Haskell
2142320	Seymour	33.374444	-99.776111	surveillance	GCD Current Observation	Haskell
2150436	Seymour	33.187222	-99.853612	surveillance	GCD Current Observation	Haskell

2151801	Seymour	33.143889	-99.708056	surveillance	GCD Current Observation	Haskell
2252107	Seymour	33.244722	-100.621389	surveillance	TWDB Current Observation	Kent
2252110	Seymour	33.244722	-100.622222	surveillance	TWDB Current Observation	Kent
2913602	Seymour	32.8022222	-100.3983333	surveillance	TWDB Current Observation	Fisher
2923606	Seymour	32.6697222	-100.1341667	surveillance	TWDB Current Observation	Jones
2924310	Seymour	32.7216667	-100.005	surveillance	TWDB Current Observation	Jones
3002609	Seymour	32.9366667	-99.7669444	surveillance	TWDB Current Observation	Jones
3019405	Seymour	32.6952778	-99.7244444	surveillance	TWDB Current Observation	Jones
3025715	Seymour	32.5175	-99.9913889	surveillance	TWDB Current Observation	Taylor
3027132	Seymour	32.5958333	-99.7502778	surveillance	TWDB Current Observation	Jones

TWDB state well number	national aquifer	latitude	longitude	monitoring category	observation type	County
260303	High Plains	36.124167	-102.508612	trend	TWDB Recorder	Dallam
354301	High Plains	36.243334	-101.262223	trend	TWDB Recorder	Hansford
503709	High Plains	35.889167	-100.74	trend	GCD Recorder	Roberts
510953	High Plains	35.769167	-100.775833	trend	GCD Recorder	Roberts
526501	High Plains	35.570555	-100.83	trend	GCD Recorder	Gray
529505	High Plains	35.574444	-100.434167	trend	GCD Recorder	Wheeler
635912	High Plains	35.4136111	-101.64	trend	GCD Recorder	Potter
655504	High Plains	35.1811111	-101.1691667	trend	GCD Recorder	Armstrong
712401	High Plains	35.805834	-102.613612	trend	TWDB Recorder	Hartley
1004901	High Plains	34.8955556	-102.5277778	trend	TWDB Recorder	Deaf Smith
1051909	High Plains	34.146667	-102.658334	trend	TWDB Recorder	Bailey
1053602	High Plains	34.169444	-102.402778	trend	TWDB Recorder	Lamb
1142315	High Plains	34.3544444	-101.7586111	trend	TWDB Recorder	Swisher
1151403	High Plains	34.1922222	-101.7272222	trend	TWDB Recorder	Hale
1204452	High Plains	34.939445	-100.605556	trend	GCD Recorder	Donley
1211118	High Plains	34.8733333	-100.7208333	trend	GCD Recorder	Donley
2330103	High Plains	33.587778	-101.341667	trend	TWDB Recorder	Crosby
2462601	High Plains	33.066112	-102.291111	trend	TWDB Recorder	Terry
2739903	High Plains	32.386667	-102.147778	trend	TWDB Recorder	Martin
2825604	High Plains	32.575	-101.881389	trend	TWDB Recorder	Dawson
148902	High Plains	36.251389	-103.004167	surveillance	GCD Current Observation	Dallam
164301	High Plains	36.119722	-103.001112	surveillance	GCD Current Observation	Dallam
164901	High Plains	36.038334	-103.040834	surveillance	GCD Current Observation	Hartley
235803	High Plains	36.388889	-102.700001	surveillance	GCD Current Observation	Dallam
236903	High Plains	36.411112	-102.540278	surveillance	GCD Current Observation	Dallam
237701	High Plains	36.400834	-102.483611	surveillance	GCD Current Observation	Dallam
239502	High Plains	36.451945	-102.191945	surveillance	GCD Current Observation	Dallam
239602	High Plains	36.444167	-102.152223	surveillance	GCD Current Observation	Sherman
249201	High Plains	36.241389	-102.932778	surveillance	GCD Current Observation	Dallam
249801	High Plains	36.148611	-102.941111	surveillance	GCD Current Observation	Dallam
250403	High Plains	36.202501	-102.836667	surveillance	GCD Current Observation	Dallam
252601	High Plains	36.205556	-102.522222	surveillance	GCD Current Observation	Dallam
255802	High Plains	36.127222	-102.186945	surveillance	GCD Current Observation	Dallam
255903	High Plains	36.153889	-102.133611	surveillance	GCD Current Observation	Sherman

256201	High Plains	36.241389	-102.053056	surveillance	GCD Current Observation	Sherman
262901	High Plains	36.040278	-102.262501	surveillance	GCD Current Observation	Hartley
335201	High Plains	36.477778	-101.696389	surveillance	GCD Current Observation	Sherman
336501	High Plains	36.444722	-101.568055	surveillance	GCD Current Observation	Hansford
340904	High Plains	36.404723	-101.003612	surveillance	GCD Current Observation	Ochiltree
341103	High Plains	36.343056	-101.991389	surveillance	GCD Current Observation	Sherman
342802	High Plains	36.277778	-101.823889	surveillance	GCD Current Observation	Sherman
345801	High Plains	36.284167	-101.451945	surveillance	GCD Current Observation	Hansford
346604	High Plains	36.313612	-101.291389	surveillance	GCD Current Observation	Hansford
350503	High Plains	36.168333	-101.824722	surveillance	GCD Current Observation	Sherman
355302	High Plains	36.220833	-101.136111	surveillance	GCD Current Observation	Hansford
355503	High Plains	36.184167	-101.181944	surveillance	GCD Current Observation	Hansford
356801	High Plains	36.126389	-101.079167	surveillance	GCD Current Observation	Ochiltree
357810	High Plains	36.028889	-101.918333	surveillance	GCD Current Observation	Moore
358509	High Plains	36.0675	-101.792222	surveillance	GCD Current Observation	Sherman
358709	High Plains	36.024444	-101.833334	surveillance	GCD Current Observation	Moore
359301	High Plains	36.096111	-101.658889	surveillance	GCD Current Observation	Sherman
361404	High Plains	36.081389	-101.478611	surveillance	GCD Current Observation	Hansford
361802	High Plains	36.026111	-101.426944	surveillance	GCD Current Observation	Hutchinson
362604	High Plains	36.081111	-101.288334	surveillance	GCD Current Observation	Hansford
362805	High Plains	36.003889	-101.319444	surveillance	GCD Current Observation	Hutchinson
363803	High Plains	36.035	-101.176389	surveillance	GCD Current Observation	Hutchinson
436209	High Plains	36.462778	-100.543056	surveillance	GCD Current Observation	Lipscomb
436501	High Plains	36.435	-100.574444	surveillance	GCD Current Observation	Ochiltree
436901	High Plains	36.400556	-100.513056	surveillance	GCD Current Observation	Lipscomb
438904	High Plains	36.404723	-100.264723	surveillance	GCD Current Observation	Lipscomb
439401	High Plains	36.455834	-100.219444	surveillance	GCD Current Observation	Lipscomb
440501	High Plains	36.440556	-100.070278	surveillance	GCD Current Observation	Lipscomb
440601	High Plains	36.436945	-100.027222	surveillance	GCD Current Observation	Lipscomb
442201	High Plains	36.333611	-100.820555	surveillance	GCD Current Observation	Ochiltree
443701	High Plains	36.275278	-100.746667	surveillance	GCD Current Observation	Ochiltree
446201	High Plains	36.358056	-100.306389	surveillance	GCD Current Observation	Lipscomb
448501	High Plains	36.299445	-100.063612	surveillance	GCD Current Observation	Lipscomb
449601	High Plains	36.188056	-100.876667	surveillance	GCD Current Observation	Ochiltree
453101	High Plains	36.233334	-100.475	surveillance	GCD Current Observation	Lipscomb
459201	High Plains	36.103334	-100.683055	surveillance	GCD Current Observation	Ochiltree
462902	High Plains	36.026667	-100.274722	surveillance	GCD Current Observation	Hemphill
463502	High Plains	36.058889	-100.170555	surveillance	GCD Current Observation	Lipscomb
464901	High Plains	36.015834	-100.027222	surveillance	GCD Current Observation	Hemphill
501801	High Plains	35.883334	-100.950556	surveillance	GCD Current Observation	Roberts
504601	High Plains	35.944445	-100.529722	surveillance	GCD Current Observation	Hemphill
505801	High Plains	35.908612	-100.449445	surveillance	GCD Current Observation	Hemphill
506905	High Plains	35.912501	-100.2775	surveillance	GCD Current Observation	Hemphill
507301	High Plains	35.994722	-100.133611	surveillance	GCD Current Observation	Hemphill
508502	High Plains	35.955001	-100.068611	surveillance	GCD Current Observation	Hemphill
509502	High Plains	35.810278	-100.926667	surveillance	GCD Current Observation	Roberts
511401	High Plains	35.797222	-100.744445	surveillance	GCD Current Observation	Roberts

513501	High Plains	35.795	-100.416667	surveillance	GCD Current Observation	Hemphill
514703	High Plains	35.786389	-100.364723	surveillance	GCD Current Observation	Hemphill
515901	High Plains	35.786389	-100.165001	surveillance	GCD Current Observation	Hemphill
516901	High Plains	35.776667	-100.025555	surveillance	GCD Current Observation	Hemphill
517804	High Plains	35.654723	-100.950834	surveillance	GCD Current Observation	Roberts
518702	High Plains	35.665556	-100.873333	surveillance	GCD Current Observation	Roberts
521402	High Plains	35.690278	-100.492222	surveillance	GCD Current Observation	Hemphill
522801	High Plains	35.660834	-100.304445	surveillance	GCD Current Observation	Hemphill
523202	High Plains	35.709167	-100.199167	surveillance	GCD Current Observation	Hemphill
526403	High Plains	35.560278	-100.8425	surveillance	GCD Current Observation	Gray
528302	High Plains	35.624722	-100.511667	surveillance	GCD Current Observation	Hemphill
528902	High Plains	35.534167	-100.509445	surveillance	GCD Current Observation	Wheeler
533401	High Plains	35.449167	-100.969722	surveillance	GCD Current Observation	Gray
534507	High Plains	35.431667	-100.826667	surveillance	GCD Current Observation	Gray
536705	High Plains	35.395834	-100.617222	surveillance	GCD Current Observation	Gray
538409	High Plains	35.434445	-100.351945	surveillance	GCD Current Observation	Wheeler
540201	High Plains	35.478611	-100.052501	surveillance	GCD Current Observation	Wheeler
542201	High Plains	35.371389	-100.811945	surveillance	GCD Current Observation	Gray
545907	High Plains	35.280833	-100.410834	surveillance	GCD Current Observation	Wheeler
549604	High Plains	35.174722	-100.881111	surveillance	GCD Current Observation	Donley
551101	High Plains	35.213056	-100.729444	surveillance	GCD Current Observation	Gray
551715	High Plains	35.164723	-100.749722	surveillance	GCD Current Observation	Donley
552111	High Plains	35.221111	-100.614167	surveillance	GCD Current Observation	Gray
552307	High Plains	35.216944	-100.507223	surveillance	GCD Current Observation	Wheeler
557502	High Plains	35.0769444	-100.9408333	surveillance	GCD Current Observation	Donley
601603	High Plains	35.923333	-101.891667	surveillance	GCD Current Observation	Moore
602802	High Plains	35.904167	-101.810834	surveillance	GCD Current Observation	Moore
606102	High Plains	35.9658333	-101.3552778	surveillance	TWDB Current Observation	Hutchinson
609202	High Plains	35.850834	-101.936945	surveillance	GCD Current Observation	Moore
610201	High Plains	35.871389	-101.8175	surveillance	GCD Current Observation	Moore
611204	High Plains	35.866944	-101.700556	surveillance	GCD Current Observation	Moore
613703	High Plains	35.7858333	-101.4908333	surveillance	TWDB Current Observation	Hutchinson
616601	High Plains	35.810001	-101.0275	surveillance	GCD Current Observation	Roberts
617801	High Plains	35.6297222	-101.9325	surveillance	TWDB Current Observation	Moore
623503	High Plains	35.6827778	-101.1880556	surveillance	TWDB Current Observation	Hutchinson
624304	High Plains	35.7225	-101.015278	surveillance	GCD Current Observation	Roberts
624801	High Plains	35.64	-101.069722	surveillance	GCD Current Observation	Roberts
629703	High Plains	35.510278	-101.486667	surveillance	GCD Current Observation	Carson
630401	High Plains	35.580278	-101.373889	surveillance	GCD Current Observation	Carson
632803	High Plains	35.502778	-101.055556	surveillance	GCD Current Observation	Gray
635206	High Plains	35.4925	-101.696111	surveillance	GCD Current Observation	Potter
635625	High Plains	35.449445	-101.650001	surveillance	GCD Current Observation	Potter
636154	High Plains	35.483334	-101.614723	surveillance	GCD Current Observation	Carson
638807	High Plains	35.391389	-101.292778	surveillance	GCD Current Observation	Carson
640501	High Plains	35.440834	-101.059723	surveillance	GCD Current Observation	Gray
640765	High Plains	35.393611	-101.0875	surveillance	GCD Current Observation	Carson
642502	High Plains	35.300556	-101.816389	surveillance	GCD Current Observation	Potter

644304	High Plains	35.360001	-101.521111	surveillance	GCD Current Observation	Carson
644701	High Plains	35.266389	-101.596111	surveillance	GCD Current Observation	Carson
645104	High Plains	35.354445	-101.490556	surveillance	GCD Current Observation	Carson
645210	High Plains	35.345	-101.451945	surveillance	GCD Current Observation	Carson
645513	High Plains	35.328055	-101.444445	surveillance	GCD Current Observation	Carson
648253	High Plains	35.336667	-101.046667	surveillance	GCD Current Observation	Gray
649503	High Plains	35.191667	-101.952223	surveillance	GCD Current Observation	Potter
649718	High Plains	35.161667	-101.969722	surveillance	GCD Current Observation	Randall
650610	High Plains	35.1747222	-101.7611111	surveillance	TWDB Current Observation	Randall
652508	High Plains	35.208056	-101.561945	surveillance	GCD Current Observation	Carson
652906	High Plains	35.138056	-101.529444	surveillance	GCD Current Observation	Armstrong
654902	High Plains	35.128333	-101.251667	surveillance	GCD Current Observation	Armstrong
656306	High Plains	35.230555	-101.027778	surveillance	GCD Current Observation	Gray
656702	High Plains	35.158612	-101.098889	surveillance	GCD Current Observation	Armstrong
657906	High Plains	35.0241667	-101.895	surveillance	TWDB Current Observation	Randall
658403	High Plains	35.0433333	-101.8658333	surveillance	TWDB Current Observation	Randall
659201	High Plains	35.1033333	-101.6858333	surveillance	TWDB Current Observation	Randall
660902	High Plains	35.001112	-101.529167	surveillance	GCD Current Observation	Armstrong
661608	High Plains	35.044445	-101.383334	surveillance	GCD Current Observation	Armstrong
662301	High Plains	35.111667	-101.2775	surveillance	GCD Current Observation	Armstrong
663204	High Plains	35.093889	-101.183611	surveillance	GCD Current Observation	Armstrong
664404	High Plains	35.056667	-101.090278	surveillance	GCD Current Observation	Armstrong
664811	High Plains	35.027222	-101.063889	surveillance	GCD Current Observation	Donley
701801	High Plains	35.875278	-102.941389	surveillance	GCD Current Observation	Hartley
705101	High Plains	35.971389	-102.4775	surveillance	GCD Current Observation	Hartley
707101	High Plains	35.968055	-102.212223	surveillance	GCD Current Observation	Hartley
708702	High Plains	35.880833	-102.121667	surveillance	GCD Current Observation	Moore
709502	High Plains	35.82	-102.955001	surveillance	GCD Current Observation	Hartley
709902	High Plains	35.79	-102.876944	surveillance	GCD Current Observation	Hartley
711601	High Plains	35.800278	-102.651389	surveillance	GCD Current Observation	Hartley
712402	High Plains	35.822222	-102.598056	surveillance	GCD Current Observation	Hartley
713902	High Plains	35.776389	-102.38	surveillance	GCD Current Observation	Hartley
715201	High Plains	35.863056	-102.171389	surveillance	GCD Current Observation	Hartley
715603	High Plains	35.807778	-102.130278	surveillance	GCD Current Observation	Moore
718101	High Plains	35.718611	-102.858889	surveillance	GCD Current Observation	Hartley
722301	High Plains	35.745278	-102.289445	surveillance	GCD Current Observation	Hartley
734801	High Plains	35.4011111	-102.8147222	surveillance	TWDB Current Observation	Oldham
744807	High Plains	35.2691667	-102.5638889	surveillance	TWDB Current Observation	Oldham
745601	High Plains	35.3041667	-102.4130556	surveillance	TWDB Current Observation	Oldham
751601	High Plains	35.2002778	-102.6555556	surveillance	TWDB Current Observation	Oldham
752610	High Plains	35.2005556	-102.5055556	surveillance	TWDB Current Observation	Oldham
753227	High Plains	35.2405556	-102.4502778	surveillance	TWDB Current Observation	Oldham
756511	High Plains	35.189722	-102.045834	surveillance	GCD Current Observation	Potter
758901	High Plains	35.01	-102.7822222	surveillance	TWDB Current Observation	Deaf Smith
760302	High Plains	35.1236111	-102.5119444	surveillance	TWDB Current Observation	Deaf Smith
763202	High Plains	35.094722	-102.202778	surveillance	GCD Current Observation	Deaf Smith
763902	High Plains	35.025278	-102.150556	surveillance	GCD Current Observation	Randall

924302	High Plains	34.740278	-103.027778	surveillance	GCD Current Observation	Parmer
940201	High Plains	34.481667	-103.043056	surveillance	GCD Current Observation	Parmer
964301	High Plains	34.0925	-103.021111	surveillance	GCD Current Observation	Bailey
1004603	High Plains	34.925278	-102.523611	surveillance	GCD Current Observation	Deaf Smith
1006201	High Plains	34.971389	-102.314723	surveillance	GCD Current Observation	Deaf Smith
1009401	High Plains	34.8155556	-102.9897222	surveillance	TWDB Current Observation	Deaf Smith
1011404	High Plains	34.793611	-102.708612	surveillance	GCD Current Observation	Deaf Smith
1013307	High Plains	34.8475	-102.404445	surveillance	GCD Current Observation	Deaf Smith
1018901	High Plains	34.645278	-102.77	surveillance	GCD Current Observation	Parmer
1020402	High Plains	34.670833	-102.599722	surveillance	GCD Current Observation	Parmer
1021201	High Plains	34.749722	-102.424167	surveillance	GCD Current Observation	Deaf Smith
1023902	High Plains	34.657501	-102.139167	surveillance	GCD Current Observation	Castro
1025402	High Plains	34.579722	-102.973611	surveillance	GCD Current Observation	Parmer
1027501	High Plains	34.5694444	-102.6836111	surveillance	GCD Current Observation	Parmer
1029201	High Plains	34.590556	-102.456112	surveillance	GCD Current Observation	Castro
1031201	High Plains	34.5841667	-102.185	surveillance	GCD Current Observation	Castro
1032601	High Plains	34.558889	-102.005834	surveillance	GCD Current Observation	Castro
1034802	High Plains	34.400834	-102.815834	surveillance	GCD Current Observation	Parmer
1036102	High Plains	34.486111	-102.588334	surveillance	GCD Current Observation	Parmer
1037301	High Plains	34.484445	-102.407223	surveillance	GCD Current Observation	Castro
1039102	High Plains	34.479167	-102.226389	surveillance	GCD Current Observation	Castro
1041209	High Plains	34.346667	-102.956112	surveillance	GCD Current Observation	Parmer
1042904	High Plains	34.261667	-102.763056	surveillance	GCD Current Observation	Bailey
1043204	High Plains	34.345556	-102.670278	surveillance	GCD Current Observation	Parmer
1043501	High Plains	34.297222	-102.689167	surveillance	GCD Current Observation	Bailey
1044203	High Plains	34.365278	-102.542222	surveillance	GCD Current Observation	Parmer
1045402	High Plains	34.298611	-102.495278	surveillance	GCD Current Observation	Lamb
1046302	High Plains	34.340556	-102.277778	surveillance	GCD Current Observation	Castro
1046601	High Plains	34.2975	-102.285556	surveillance	GCD Current Observation	Lamb
1048302	High Plains	34.352501	-102.038334	surveillance	GCD Current Observation	Castro
1048605	High Plains	34.307223	-102.023055	surveillance	GCD Current Observation	Hale
1049104	High Plains	34.230555	-102.981389	surveillance	GCD Current Observation	Bailey
1051616	High Plains	34.191389	-102.661389	surveillance	GCD Current Observation	Bailey
1052601	High Plains	34.183611	-102.517222	surveillance	GCD Current Observation	Lamb
1053307	High Plains	34.230555	-102.379444	surveillance	GCD Current Observation	Lamb
1054301	High Plains	34.244445	-102.262778	surveillance	GCD Current Observation	Lamb
1056403	High Plains	34.168889	-102.101389	surveillance	GCD Current Observation	Lamb
1058502	High Plains	34.070555	-102.829444	surveillance	GCD Current Observation	Bailey
1060307	High Plains	34.093889	-102.520833	surveillance	GCD Current Observation	Lamb
1061201	High Plains	34.1144444	-102.4186111	surveillance	GCD Current Observation	Lamb
1062307	High Plains	34.091945	-102.274167	surveillance	GCD Current Observation	Lamb
1063702	High Plains	34.013612	-102.223333	surveillance	GCD Current Observation	Lamb
1101309	High Plains	34.9761111	-101.8930556	surveillance	TWDB Current Observation	Randall
1102303	High Plains	34.9861111	-101.7677778	surveillance	TWDB Current Observation	Randall
1104101	High Plains	34.989167	-101.593334	surveillance	GCD Current Observation	Armstrong
1107401	High Plains	34.916944	-101.229167	surveillance	GCD Current Observation	Armstrong
1108308	High Plains	34.996389	-101.018055	surveillance	GCD Current Observation	Donley

1109724	High Plains	34.7808333	-101.9766667	surveillance	TWDB Current Observation	Randall
1111801	High Plains	34.763334	-101.686945	surveillance	GCD Current Observation	Randall
1112701	High Plains	34.7783333	-101.6166667	surveillance	GCD Current Observation	Armstrong
1118702	High Plains	34.661112	-101.873055	surveillance	GCD Current Observation	Swisher
1119618	High Plains	34.679444	-101.660001	surveillance	GCD Current Observation	Swisher
1120401	High Plains	34.683334	-101.616944	surveillance	GCD Current Observation	Swisher
1121102	High Plains	34.746389	-101.492778	surveillance	GCD Current Observation	Swisher
1121801	High Plains	34.6433333	-101.4347222	surveillance	TWDB Current Observation	Briscoe
1126607	High Plains	34.558612	-101.770555	surveillance	GCD Current Observation	Swisher
1128501	High Plains	34.576111	-101.581944	surveillance	GCD Current Observation	Swisher
1129703	High Plains	34.5138889	-101.4702778	surveillance	TWDB Current Observation	Briscoe
1133103	High Plains	34.464167	-101.990278	surveillance	GCD Current Observation	Swisher
1134701	High Plains	34.398889	-101.863056	surveillance	GCD Current Observation	Swisher
1136402	High Plains	34.448056	-101.608334	surveillance	GCD Current Observation	Swisher
1138728	High Plains	34.3775	-101.3472222	surveillance	TWDB Current Observation	Briscoe
1139605	High Plains	34.4577778	-101.155	surveillance	TWDB Current Observation	Briscoe
1141404	High Plains	34.319444	-101.973889	surveillance	GCD Current Observation	Swisher
1144602	High Plains	34.317778	-101.540556	surveillance	GCD Current Observation	Swisher
1145408	High Plains	34.303612	-101.4675	surveillance	GCD Current Observation	Floyd
1145512	High Plains	34.3183333	-101.4458333	surveillance	TWDB Current Observation	Briscoe
1146101	High Plains	34.3491667	-101.3336111	surveillance	TWDB Current Observation	Briscoe
1147703	High Plains	34.266944	-101.217778	surveillance	GCD Current Observation	Floyd
1153503	High Plains	34.197222	-101.441667	surveillance	GCD Current Observation	Floyd
1157202	High Plains	34.108056	-101.945834	surveillance	GCD Current Observation	Hale
1157401	High Plains	34.065001	-101.97	surveillance	GCD Current Observation	Hale
1158205	High Plains	34.109167	-101.796667	surveillance	GCD Current Observation	Hale
1159202	High Plains	34.118889	-101.676111	surveillance	GCD Current Observation	Hale
1160204	High Plains	34.0925	-101.578055	surveillance	GCD Current Observation	Hale
1160502	High Plains	34.058612	-101.559445	surveillance	GCD Current Observation	Floyd
1161204	High Plains	34.108334	-101.445556	surveillance	GCD Current Observation	Floyd
1163901	High Plains	34.0225	-101.158056	surveillance	GCD Current Observation	Floyd
1201624	High Plains	34.918055	-100.882222	surveillance	GCD Current Observation	Donley
1202812	High Plains	34.909167	-100.805834	surveillance	GCD Current Observation	Donley
1203601	High Plains	34.940278	-100.666389	surveillance	GCD Current Observation	Donley
1210301	High Plains	34.858612	-100.762501	surveillance	GCD Current Observation	Donley
1212104	High Plains	34.859445	-100.611112	surveillance	GCD Current Observation	Donley
2301401	High Plains	33.929722	-101.969722	surveillance	GCD Current Observation	Hale
2303304	High Plains	33.969444	-101.635556	surveillance	GCD Current Observation	Hale
2303702	High Plains	33.906667	-101.731389	surveillance	GCD Current Observation	Hale
2304106	High Plains	33.963056	-101.591945	surveillance	GCD Current Observation	Hale
2304701	High Plains	33.886111	-101.606667	surveillance	GCD Current Observation	Hale
2305301	High Plains	33.981389	-101.394445	surveillance	GCD Current Observation	Floyd
2306704	High Plains	33.905001	-101.351945	surveillance	GCD Current Observation	Floyd
2309201	High Plains	33.839167	-101.920833	surveillance	GCD Current Observation	Hale
2309601	High Plains	33.8225	-101.9155556	surveillance	GCD Current Observation	Lubbock
2311601	High Plains	33.7986111	-101.6361111	surveillance	GCD Current Observation	Lubbock
2312301	High Plains	33.868333	-101.512501	surveillance	GCD Current Observation	Floyd

2312801	High Plains	33.7613889	-101.5602778	surveillance	GCD Current Observation	Crosby
2312803	High Plains	33.751112	-101.565001	surveillance	GCD Current Observation	Lubbock
2313502	High Plains	33.821111	-101.444167	surveillance	GCD Current Observation	Crosby
2315501	High Plains	33.8213889	-101.205	surveillance	GCD Current Observation	Crosby
2316206	High Plains	33.851667	-101.065001	surveillance	GCD Current Observation	Floyd
2316912	High Plains	33.7505556	-101.0205556	surveillance	TWDB Current Observation	Dickens
2318703	High Plains	33.628889	-101.845834	surveillance	GCD Current Observation	Lubbock
2319601	High Plains	33.677222	-101.639445	surveillance	GCD Current Observation	Lubbock
2327211	High Plains	33.600556	-101.678889	surveillance	GCD Current Observation	Lubbock
2331201	High Plains	33.6013889	-101.1944444	surveillance	GCD Current Observation	Crosby
2335503	High Plains	33.424722	-101.701945	surveillance	GCD Current Observation	Lubbock
2335704	High Plains	33.382222	-101.740278	surveillance	GCD Current Observation	Lynn
2336301	High Plains	33.491389	-101.518611	surveillance	GCD Current Observation	Crosby
2336801	High Plains	33.3766667	-101.5558333	surveillance	TWDB Current Observation	Garza
2341202	High Plains	33.346389	-101.956945	surveillance	GCD Current Observation	Lynn
2343504	High Plains	33.300556	-101.670555	surveillance	GCD Current Observation	Lynn
2344904	High Plains	33.255	-101.5313889	surveillance	TWDB Current Observation	Garza
2353901	High Plains	33.1402778	-101.4116667	surveillance	TWDB Current Observation	Garza
2360801	High Plains	33.0188889	-101.5563889	surveillance	TWDB Current Observation	Garza
2405102	High Plains	33.965834	-102.481667	surveillance	GCD Current Observation	Lamb
2405502	High Plains	33.930555	-102.418611	surveillance	GCD Current Observation	Lamb
2408501	High Plains	33.943056	-102.054445	surveillance	GCD Current Observation	Hale
2409401	High Plains	33.7983333	-102.9722222	surveillance	GCD Current Observation	Cochran
2410702	High Plains	33.791111	-102.87	surveillance	GCD Current Observation	Cochran
2411803	High Plains	33.753334	-102.669722	surveillance	GCD Current Observation	Cochran
2412101	High Plains	33.839167	-102.595834	surveillance	GCD Current Observation	Lamb
2414501	High Plains	33.816112	-102.308056	surveillance	GCD Current Observation	Hockley
2414701	High Plains	33.762501	-102.364445	surveillance	GCD Current Observation	Hockley
2415108	High Plains	33.874444	-102.208612	surveillance	GCD Current Observation	Lamb
2415701	High Plains	33.778055	-102.212778	surveillance	GCD Current Observation	Hockley
2415901	High Plains	33.791667	-102.155001	surveillance	GCD Current Observation	Hockley
2418601	High Plains	33.688056	-102.778333	surveillance	GCD Current Observation	Cochran
2419902	High Plains	33.642222	-102.644445	surveillance	GCD Current Observation	Cochran
2420202	High Plains	33.725	-102.541945	surveillance	GCD Current Observation	Hockley
2421301	High Plains	33.717222	-102.383334	surveillance	GCD Current Observation	Hockley
2422201	High Plains	33.738056	-102.322222	surveillance	GCD Current Observation	Hockley
2424903	High Plains	33.657501	-102.025833	surveillance	GCD Current Observation	Lubbock
2426101	High Plains	33.621111	-102.862778	surveillance	GCD Current Observation	Cochran
2428501	High Plains	33.560278	-102.565834	surveillance	GCD Current Observation	Hockley
2429308	High Plains	33.6022222	-102.4038889	surveillance	GCD Current Observation	Hockley
2431101	High Plains	33.607223	-102.236945	surveillance	GCD Current Observation	Hockley
2437308	High Plains	33.478055	-102.392778	surveillance	GCD Current Observation	Hockley
2439702	High Plains	33.403334	-102.2325	surveillance	GCD Current Observation	Hockley
2440403	High Plains	33.449722	-102.124444	surveillance	GCD Current Observation	Hockley
2444301	High Plains	33.358334	-102.521111	surveillance	GCD Current Observation	Terry
2448602	High Plains	33.326389	-102.034722	surveillance	GCD Current Observation	Lynn
2453501	High Plains	33.180278	-102.429444	surveillance	GCD Current Observation	Terry

2456501	High Plains	33.174444	-102.059723	surveillance	GCD Current Observation	Lynn
2457101	High Plains	33.12	-102.990278	surveillance	GCD Current Observation	Yoakum
2463201	High Plains	33.1225	-102.188334	surveillance	GCD Current Observation	Terry
2464703	High Plains	33.016389	-102.09	surveillance	GCD Current Observation	Terry
2524601	High Plains	33.707223	-103.0225	surveillance	GCD Current Observation	Cochran
2556802	High Plains	33.138056	-103.047222	surveillance	GCD Current Observation	Yoakum
2705302	High Plains	32.959723	-102.385278	surveillance	GCD Current Observation	Terry
2706901	High Plains	32.914723	-102.277778	surveillance	GCD Current Observation	Gaines
2708505	High Plains	32.9172222	-102.0727778	surveillance	GCD Current Observation	Dawson
2710711	High Plains	32.7547222	-102.8380556	surveillance	GCD Current Observation	Gaines
2711707	High Plains	32.758334	-102.747222	surveillance	GCD Current Observation	Gaines
2716802	High Plains	32.7913889	-102.0488889	surveillance	GCD Current Observation	Dawson
2719601	High Plains	32.694167	-102.637778	surveillance	GCD Current Observation	Gaines
2724902	High Plains	32.6630556	-102.0405556	surveillance	GCD Current Observation	Dawson
2732601	High Plains	32.5602778	-102.0197222	surveillance	GCD Current Observation	Dawson
2733201	High Plains	32.4711111	-102.9455556	surveillance	TWDB Current Observation	Andrews
2737801	High Plains	32.4025	-102.4330556	surveillance	TWDB Current Observation	Andrews
2738802	High Plains	32.4163889	-102.3186111	surveillance	TWDB Current Observation	Andrews
2740601	High Plains	32.446389	-102.035556	surveillance	GCD Current Observation	Martin
2743701	High Plains	32.2722222	-102.7338889	surveillance	TWDB Current Observation	Andrews
2748501	High Plains	32.321111	-102.061945	surveillance	GCD Current Observation	Martin
2750802	High Plains	32.1555556	-102.8111111	surveillance	TWDB Current Observation	Andrews
2763901	High Plains	32.0108333	-102.1405556	surveillance	TWDB Current Observation	Midland
2802102	High Plains	32.963889	-101.860278	surveillance	GCD Current Observation	Lynn
2803901	High Plains	32.9011111	-101.6519444	surveillance	TWDB Current Observation	Borden
2809908	High Plains	32.7888889	-101.8977778	surveillance	GCD Current Observation	Dawson
2812402	High Plains	32.8311111	-101.5852778	surveillance	TWDB Current Observation	Borden
2825801	High Plains	32.502778	-101.939445	surveillance	GCD Current Observation	Martin
2826302	High Plains	32.6052778	-101.7577778	surveillance	GCD Current Observation	Dawson
2827704	High Plains	32.515278	-101.714723	surveillance	GCD Current Observation	Martin
2833802	High Plains	32.389167	-101.930833	surveillance	GCD Current Observation	Martin
2835201	High Plains	32.486389	-101.696945	surveillance	GCD Current Observation	Martin
2835812	High Plains	32.3875	-101.6722222	surveillance	GCD Current Observation	Howard
2836601	High Plains	32.421944	-101.541945	surveillance	GCD Current Observation	Howard
2838404	High Plains	32.4486111	-101.3697222	surveillance	GCD Current Observation	Howard
2842705	High Plains	32.288889	-101.855278	surveillance	GCD Current Observation	Martin
2846401	High Plains	32.3322222	-101.3530556	surveillance	GCD Current Observation	Howard
2850704	High Plains	32.150278	-101.834445	surveillance	GCD Current Observation	Martin
2851902	High Plains	32.13	-101.6477778	surveillance	GCD Current Observation	Howard
2858304	High Plains	32.093056	-101.758056	surveillance	GCD Current Observation	Martin
2858402	High Plains	32.0636111	-101.8675	surveillance	TWDB Current Observation	Midland
4402410	High Plains	31.9530556	-101.8488889	surveillance	TWDB Current Observation	Midland
4507421	High Plains	31.9202778	-102.2233333	surveillance	TWDB Current Observation	Midland
4508602	High Plains	31.9386111	-102.0191667	surveillance	TWDB Current Observation	Midland
4515201	High Plains	31.8636111	-102.2005556	surveillance	TWDB Current Observation	Midland

TWDB state well number	national aquifer	latitude	longitude	monitoring category	observation type	County
4525715	Pecos River Basin	31.541389	-102.995	trend	TWDB Recorder	Ward
4615924	Pecos River Basin	31.758056	-103.159723	trend	Other Cooperator Recorder	Winkler
4644501	Pecos River Basin	31.324167	-103.543889	trend	TWDB Recorder	Reeves
4648806	Pecos River Basin	31.290556	-103.050001	trend	TWDB Recorder	Pecos
4501901	Pecos River Basin	31.902778	-102.905278	surveillance	TWDB Current Observation	Winkler
4527203	Pecos River Basin	31.621111	-102.688611	surveillance	TWDB Current Observation	Crane
4533501	Pecos River Basin	31.438334	-102.931111	surveillance	TWDB Current Observation	Ward
4536109	Pecos River Basin	31.466944	-102.619167	surveillance	TWDB Current Observation	Crane
4551306	Pecos River Basin	31.244722	-102.649167	surveillance	GCD Current Observation	Pecos
4553303	Pecos River Basin	31.229444	-102.409445	surveillance	TWDB Current Observation	Crane
4603401	Pecos River Basin	31.946389	-103.709167	surveillance	TWDB Current Observation	Loving
4606301	Pecos River Basin	31.987778	-103.259723	surveillance	TWDB Current Observation	Winkler
4609901	Pecos River Basin	31.7875	-103.888056	surveillance	TWDB Current Observation	Reeves
4615402	Pecos River Basin	31.831111	-103.210278	surveillance	TWDB Current Observation	Winkler
4620403	Pecos River Basin	31.667778	-103.603056	surveillance	TWDB Current Observation	Loving
4624301	Pecos River Basin	31.730278	-103.008334	surveillance	TWDB Current Observation	Winkler
4624705	Pecos River Basin	31.639167	-103.093611	surveillance	TWDB Current Observation	Ward
4632706	Pecos River Basin	31.538611	-103.085556	surveillance	TWDB Current Observation	Ward
4635601	Pecos River Basin	31.418889	-103.645	surveillance	TWDB Current Observation	Reeves
4636909	Pecos River Basin	31.3925	-103.540834	surveillance	TWDB Current Observation	Reeves
4637101	Pecos River Basin	31.460001	-103.473889	surveillance	TWDB Current Observation	Ward
4640206	Pecos River Basin	31.48	-103.046945	surveillance	TWDB Current Observation	Ward
4643213	Pecos River Basin	31.355556	-103.677778	surveillance	TWDB Current Observation	Reeves
4648503	Pecos River Basin	31.325555	-103.049167	surveillance	GCD Current Observation	Pecos
4648805	Pecos River Basin	31.270833	-103.064167	surveillance	GCD Current Observation	Pecos
4652104	Pecos River Basin	31.216389	-103.624444	surveillance	TWDB Current Observation	Reeves
4652404	Pecos River Basin	31.188334	-103.585556	surveillance	TWDB Current Observation	Reeves
4654701	Pecos River Basin	31.1275	-103.372778	surveillance	TWDB Current Observation	Reeves
4656201	Pecos River Basin	31.227778	-103.067222	surveillance	GCD Current Observation	Pecos
4656703	Pecos River Basin	31.158334	-103.113056	surveillance	GCD Current Observation	Pecos
4659508	Pecos River Basin	31.045834	-103.700556	surveillance	TWDB Current Observation	Reeves
TWDB state well number	national aquifer	latitude	longitude	monitoring category	observation type	County
4904476	Rio Grande	31.953889	-106.605834	trend	PWS or Other Current Observatic	El Paso
4913301	Rio Grande	31.87	-106.414723	trend	TWDB Recorder	El Paso
4931201	Rio Grande	31.595834	-106.191111	surveillance	TWDB Current Observation	El Paso
4841603	Rio Grande	31.292222	-105.880833	surveillance	TWDB Current Observation	Hudspeth
4842701	Rio Grande	31.273611	-105.853334	surveillance	TWDB Current Observation	Hudspeth
4841619	Rio Grande	31.2919444	-105.8797222	surveillance	TWDB Current Observation	Hudspeth
4904115	Rio Grande	31.9594444	-106.6130556	surveillance	USGS Current Observation Well	El Paso
4904117	Rio Grande	31.9875	-106.596945	surveillance	USGS Current Observation Well	El Paso
4904468	Rio Grande	31.953612	-106.612778	surveillance	USGS Current Observation Well	El Paso
4904472	Rio Grande	31.953889	-106.607223	surveillance	USGS Current Observation Well	El Paso
4904473	Rio Grande	31.953889	-106.607223	surveillance	USGS Current Observation Well	El Paso

4914422	Rio Grande	31.8316667	-106.3522222	surveillance	PWS or Other Current Observatic	El Paso
4914703	Rio Grande	31.7658333	-106.3688889	surveillance	PWS or Other Current Observatic	El Paso
4914704	Rio Grande	31.7605556	-106.3602778	surveillance	PWS or Other Current Observatic	El Paso
4940104	Rio Grande	31.4894444	-106.09	surveillance	TWDB Current Observation	El Paso
4940507	Rio Grande	31.4308333	-106.0591667	surveillance	TWDB Current Observation	El Paso

Appendix 2

TWDB sites with water-quality data in the NGWMN

TWDB state well number	national aquifer	latitude	longitude	monitoring type	county
5960703	Coastal lowlands	30.024166	-96.596944	surveillance	Austin
6607502	Coastal lowlands	29.921666	-96.201666	surveillance	Austin
6615901	Coastal lowlands	29.78361	-96.166111	surveillance	Austin
7925608	Coastal lowlands	28.58111	-97.911388	surveillance	Bee
6543707	Coastal lowlands	29.290555	-95.732221	surveillance	Brazoria
6553513	Coastal lowlands	29.194166	-95.438888	surveillance	Brazoria
6554104	Coastal lowlands	29.228054	-95.340833	surveillance	Brazoria
6559810	Coastal lowlands	29.037221	-95.703055	surveillance	Brazoria
8106212	Coastal lowlands	28.999721	-95.324721	surveillance	Brazoria
8455328	Coastal lowlands	27.227499	-98.155	surveillance	Brooks
8026502	Coastal lowlands	28.553055	-96.795833	surveillance	Calhoun
8858610	Coastal lowlands	26.063333	-97.761388	surveillance	Cameron
6401905	Coastal lowlands	29.87611	-94.880832	surveillance	Chambers
6411611	Coastal lowlands	29.832499	-94.635277	surveillance	Chambers
6419808	Coastal lowlands	29.631943	-94.703055	surveillance	Chambers
6428304	Coastal lowlands	29.614166	-94.53361	surveillance	Chambers
6612603	Coastal lowlands	29.805	-96.535555	surveillance	Colorado
6626202	Coastal lowlands	29.593055	-96.832221	surveillance	Colorado
6635201	Coastal lowlands	29.492777	-96.672777	surveillance	Colorado
6754204	Coastal lowlands	29.246666	-97.305277	surveillance	DeWitt
7904307	Coastal lowlands	28.992777	-97.506666	surveillance	DeWitt
7860904	Coastal lowlands	28.014166	-98.519721	surveillance	Duval
8412705	Coastal lowlands	27.769999	-98.606944	surveillance	Duval
8429311	Coastal lowlands	27.594999	-98.403333	surveillance	Duval
8436605	Coastal lowlands	27.444166	-98.528888	surveillance	Duval
8445506	Coastal lowlands	27.301666	-98.441666	surveillance	Duval
5958907	Coastal lowlands	30.019999	-96.755555	surveillance	Fayette
6609505	Coastal lowlands	29.811666	-96.91861	surveillance	Fayette
6510812	Coastal lowlands	29.768888	-95.821943	surveillance	Fort Bend
6525106	Coastal lowlands	29.603055	-95.971666	surveillance	Fort Bend
6534718	Coastal lowlands	29.398333	-95.848055	surveillance	Fort Bend
6640606	Coastal lowlands	29.447777	-96.001944	surveillance	Fort Bend
6539310	Coastal lowlands	29.489999	-95.155277	surveillance	Galveston
7914102	Coastal lowlands	28.835277	-97.365	surveillance	Goliad
7920603	Coastal lowlands	28.700277	-97.537221	surveillance	Goliad
5940707	Coastal lowlands	30.379721	-96.089444	surveillance	Grimes
6017603	Coastal lowlands	30.681388	-95.893333	surveillance	Grimes
6139509	Coastal lowlands	30.419443	-94.181666	surveillance	Hardin
6060110	Coastal lowlands	30.089999	-95.618888	surveillance	Harris
6064713	Coastal lowlands	30.026943	-95.115	surveillance	Harris
6507501	Coastal lowlands	29.932499	-95.185555	surveillance	Harris
6512516	Coastal lowlands	29.800555	-95.578054	surveillance	Harris

8724102	Coastal lowlands	26.744444	-98.117221	surveillance	Hidalgo
8747802	Coastal lowlands	26.271943	-98.176666	surveillance	Hidalgo
8849702	Coastal lowlands	26.155277	-97.961666	surveillance	Hidalgo
8002606	Coastal lowlands	28.950833	-96.770277	surveillance	Jackson
8003303	Coastal lowlands	28.971943	-96.654444	surveillance	Jackson
8004610	Coastal lowlands	28.94111	-96.538888	surveillance	Jackson
6115206	Coastal lowlands	30.841388	-94.172221	surveillance	Jasper
6201908	Coastal lowlands	30.898888	-93.880832	surveillance	Jasper
6225406	Coastal lowlands	30.553888	-93.999721	surveillance	Jasper
6233604	Coastal lowlands	30.420554	-93.894999	surveillance	Jasper
6407504	Coastal lowlands	29.951111	-94.187777	surveillance	Jefferson
6408202	Coastal lowlands	29.979166	-94.070554	surveillance	Jefferson
8443509	Coastal lowlands	27.319166	-98.676388	surveillance	Jim Hogg
8431202	Coastal lowlands	27.591388	-98.189166	surveillance	Jim Wells
8432401	Coastal lowlands	27.551944	-98.096666	surveillance	Jim Wells
7910408	Coastal lowlands	28.796944	-97.847221	surveillance	Karnes
8350205	Coastal lowlands	27.220832	-97.792221	surveillance	Kenedy
8334305	Coastal lowlands	27.494166	-97.759444	surveillance	Kleberg
8336401	Coastal lowlands	27.4575	-97.604722	surveillance	Kleberg
6633510	Coastal lowlands	29.4525	-96.936388	surveillance	Lavaca
6649103	Coastal lowlands	29.210555	-96.978888	surveillance	Lavaca
6650207	Coastal lowlands	29.236944	-96.801944	surveillance	Lavaca
6731602	Coastal lowlands	29.573054	-97.149166	surveillance	Lavaca
6135101	Coastal lowlands	30.470277	-94.741944	surveillance	Liberty
6141410	Coastal lowlands	30.32361	-94.982221	surveillance	Liberty
6151111	Coastal lowlands	30.239444	-94.740277	surveillance	Liberty
6158305	Coastal lowlands	30.100555	-94.751944	surveillance	Liberty
7831803	Coastal lowlands	28.519443	-98.199721	surveillance	Live Oak
7840903	Coastal lowlands	28.405	-98.02861	surveillance	Live Oak
7854902	Coastal lowlands	28.132221	-98.264444	surveillance	Live Oak
6557904	Coastal lowlands	29.017499	-95.893055	surveillance	Matagorda
8008201	Coastal lowlands	28.960277	-96.065833	surveillance	Matagorda
8015602	Coastal lowlands	28.830832	-96.14111	surveillance	Matagorda
8023102	Coastal lowlands	28.712777	-96.222777	surveillance	Matagorda
8111902	Coastal lowlands	28.782221	-95.632221	surveillance	Matagorda
6035703	Coastal lowlands	30.378054	-95.733888	surveillance	Montgomery
6053713	Coastal lowlands	30.140555	-95.462777	surveillance	Montgomery
6055314	Coastal lowlands	30.245277	-95.156944	surveillance	Montgomery
6063109	Coastal lowlands	30.101666	-95.248888	surveillance	Montgomery
3652705	Coastal lowlands	31.159722	-93.590833	surveillance	Newton
6212707	Coastal lowlands	30.782499	-93.588333	surveillance	Newton
8312710	Coastal lowlands	27.753888	-97.603055	surveillance	Nueces
6249302	Coastal lowlands	30.220554	-93.889444	surveillance	Orange
6102205	Coastal lowlands	30.998333	-94.826666	surveillance	Polk
6119418	Coastal lowlands	30.693055	-94.746388	surveillance	Polk
7938805	Coastal lowlands	28.410555	-97.313055	surveillance	Refugio
7946612	Coastal lowlands	28.298055	-97.272221	surveillance	Refugio

6032217	Coastal lowlands	30.594166	-95.074166	surveillance	San Jacinto
7960702	Coastal lowlands	28.017221	-97.605833	surveillance	San Patricio
8727803	Coastal lowlands	26.527221	-98.684166	surveillance	Starr
8736805	Coastal lowlands	26.378332	-98.563333	surveillance	Starr
6131503	Coastal lowlands	30.573054	-94.174999	surveillance	Tyler
7907703	Coastal lowlands	28.912777	-97.209444	surveillance	Victoria
7916602	Coastal lowlands	28.812777	-97.010277	surveillance	Victoria
6012801	Coastal lowlands	30.786944	-95.552777	surveillance	Walker
5964201	Coastal lowlands	30.095555	-96.082221	surveillance	Waller
6509704	Coastal lowlands	29.781388	-95.969443	surveillance	Waller
5945805	Coastal lowlands	30.288055	-96.441666	surveillance	Washington
5954505	Coastal lowlands	30.208055	-96.322777	surveillance	Washington
6638906	Coastal lowlands	29.399444	-96.257222	surveillance	Wharton
6647904	Coastal lowlands	29.258333	-96.155277	surveillance	Wharton
6662313	Coastal lowlands	29.11861	-96.271666	surveillance	Wharton
8834301	Coastal lowlands	26.491944	-97.785833	surveillance	Willacy

TWDB state well number	national aquifer	latitude	longitude	monitoring type	county
3458904	Texas coastal uplands	32.016112	-95.751667	surveillance	Anderson
3801501	Texas coastal uplands	31.918611	-95.920555	surveillance	Anderson
3811603	Texas coastal uplands	31.791389	-95.664723	surveillance	Anderson
3813107	Texas coastal uplands	31.865556	-95.496667	surveillance	Anderson
3821706	Texas coastal uplands	31.630555	-95.461667	surveillance	Anderson
3734103	Texas coastal uplands	31.461389	-94.855556	surveillance	Angelina
3734405	Texas coastal uplands	31.445278	-94.870833	surveillance	Angelina
3734505	Texas coastal uplands	31.4213889	-94.8033333	surveillance	Angelina
3735714	Texas coastal uplands	31.401667	-94.711667	surveillance	Angelina
6860850	Texas coastal uplands	29.034445	-98.573889	surveillance	Atascosa
7804820	Texas coastal uplands	28.909723	-98.544722	surveillance	Atascosa
7805124	Texas coastal uplands	28.959723	-98.488889	surveillance	Atascosa
7813705	Texas coastal uplands	28.788889	-98.496945	surveillance	Atascosa
5846515	Texas coastal uplands	30.321667	-97.313889	surveillance	Bastrop
5855209	Texas coastal uplands	30.221389	-97.177778	surveillance	Bastrop
5862115	Texas coastal uplands	30.092222	-97.356389	surveillance	Bastrop
5864406	Texas coastal uplands	30.050834	-97.116112	surveillance	Bastrop
6706204	Texas coastal uplands	29.9725	-97.300001	surveillance	Bastrop
6847101	Texas coastal uplands	29.354167	-98.231111	surveillance	Bexar
1645603	Texas coastal uplands	33.3280556	-94.3927778	surveillance	Bowie
1646303	Texas coastal uplands	33.357778	-94.256389	surveillance	Bowie
5921107	Texas coastal uplands	30.721667	-96.462501	surveillance	Brazos
5921909	Texas coastal uplands	30.628889	-96.416112	surveillance	Brazos
5927714	Texas coastal uplands	30.526944	-96.714167	surveillance	Burleson
6704512	Texas coastal uplands	29.919444	-97.563056	surveillance	Caldwell
6713101	Texas coastal uplands	29.848611	-97.464723	surveillance	Caldwell
3501501	Texas coastal uplands	32.955834	-94.950556	surveillance	Camp
1662704	Texas coastal uplands	33.0158333	-94.3675	surveillance	Cass

3709104	Texas coastal uplands	31.8622222	-94.9885	surveillance	Cherokee
3806603	Texas coastal uplands	31.9498611	-95.267	surveillance	Cherokee
3808108	Texas coastal uplands	31.973055	-95.095556	surveillance	Cherokee
3815502	Texas coastal uplands	31.801945	-95.178889	surveillance	Cherokee
3824804	Texas coastal uplands	31.652223	-95.075	surveillance	Cherokee
7726817	Texas coastal uplands	28.501389	-99.831389	surveillance	Dimmit
1763501	Texas coastal uplands	33.048334	-95.205278	surveillance	Franklin
3922513	Texas coastal uplands	31.6775	-96.330833	surveillance	Freestone
6961608	Texas coastal uplands	29.049167	-99.3875	surveillance	Frio
7708719	Texas coastal uplands	28.889167	-99.09	surveillance	Frio
7723809	Texas coastal uplands	28.656667	-99.190834	surveillance	Frio
6737201	Texas coastal uplands	29.497778	-97.454723	surveillance	Gonzales
6742611	Texas coastal uplands	29.326667	-97.776944	surveillance	Gonzales
6743903	Texas coastal uplands	29.267778	-97.638056	surveillance	Gonzales
6734405	Texas coastal uplands	29.444167	-97.840278	surveillance	Guadalupe
3520805	Texas coastal uplands	32.636667	-94.573055	surveillance	Harrison
3522708	Texas coastal uplands	32.6505556	-94.3444444	surveillance	Harrison
3444707	Texas coastal uplands	32.289722	-95.616944	surveillance	Henderson
3450307	Texas coastal uplands	32.239167	-95.763889	surveillance	Henderson
1760804	Texas coastal uplands	33.014723	-95.564167	surveillance	Hopkins
3829701	Texas coastal uplands	31.501389	-95.481389	surveillance	Houston
3830502	Texas coastal uplands	31.569722	-95.318611	surveillance	Houston
3838705	Texas coastal uplands	31.399722	-95.364167	surveillance	Houston
3844505	Texas coastal uplands	31.293056	-95.561945	surveillance	Houston
7808301	Texas coastal uplands	28.980555	-98.021944	surveillance	Karnes
7739407	Texas coastal uplands	28.438334	-99.248334	surveillance	La Salle
5848114	Texas coastal uplands	30.370278	-97.114445	surveillance	Lee
5856302	Texas coastal uplands	30.238611	-97.035278	surveillance	Lee
3825707	Texas coastal uplands	31.522222	-95.975833	surveillance	Leon
3833403	Texas coastal uplands	31.443889	-95.960001	surveillance	Leon
3841901	Texas coastal uplands	31.285556	-95.889167	surveillance	Leon
3849502	Texas coastal uplands	31.196945	-95.9225	surveillance	Leon
3935907	Texas coastal uplands	31.400834	-96.641667	surveillance	Limestone
7836204	Texas coastal uplands	28.460556	-98.549167	surveillance	McMullen
5902706	Texas coastal uplands	30.8975	-96.851945	surveillance	Milam
5911703	Texas coastal uplands	30.787222	-96.716944	surveillance	Milam
5917803	Texas coastal uplands	30.643334	-96.926389	surveillance	Milam
3503107	Texas coastal uplands	32.978333	-94.729444	surveillance	Morris
3710403	Texas coastal uplands	31.815001	-94.84	surveillance	Nacogdoches
3713407	Texas coastal uplands	31.832222	-94.479722	surveillance	Nacogdoches
3720501	Texas coastal uplands	31.667222	-94.562501	surveillance	Nacogdoches
3726201	Texas coastal uplands	31.583611	-94.794445	surveillance	Nacogdoches
3728503	Texas coastal uplands	31.549722	-94.546389	surveillance	Nacogdoches
3545707	Texas coastal uplands	32.279722	-94.470555	surveillance	Panola
3547502	Texas coastal uplands	32.329722	-94.183055	surveillance	Panola
3548203	Texas coastal uplands	32.364167	-94.068055	surveillance	Panola
3554703	Texas coastal uplands	32.154167	-94.360278	surveillance	Panola

3953204	Texas coastal uplands	31.23	-96.428055	surveillance	Robertson
3961703	Texas coastal uplands	31.028333	-96.487778	surveillance	Robertson
3962401	Texas coastal uplands	31.056112	-96.336667	surveillance	Robertson
5905901	Texas coastal uplands	30.895834	-96.391667	surveillance	Robertson
3541808	Texas coastal uplands	32.252223	-94.931944	surveillance	Rusk
3544806	Texas coastal uplands	32.278333	-94.563056	surveillance	Rusk
3558102	Texas coastal uplands	32.103889	-94.857501	surveillance	Rusk
3702301	Texas coastal uplands	31.991111	-94.768333	surveillance	Rusk
3703304	Texas coastal uplands	31.965556	-94.661667	surveillance	Rusk
3732709	Texas coastal uplands	31.5105556	-94.1077778	surveillance	San Augustine
3705904	Texas coastal uplands	31.906112	-94.398056	surveillance	Shelby
3707403	Texas coastal uplands	31.940278	-94.243334	surveillance	Shelby
3714504	Texas coastal uplands	31.827222	-94.294167	surveillance	Shelby
3430908	Texas coastal uplands	32.531667	-95.268889	surveillance	Smith
3437902	Texas coastal uplands	32.414167	-95.393611	surveillance	Smith
3439302	Texas coastal uplands	32.458889	-95.147778	surveillance	Smith
3455913	Texas coastal uplands	32.146111	-95.134167	surveillance	Smith
3549404	Texas coastal uplands	32.201667	-94.993889	surveillance	Smith
3518303	Texas coastal uplands	32.7127778	-94.7594444	surveillance	Upshur
3418903	Texas coastal uplands	32.646667	-95.765001	surveillance	Van Zandt
3444104	Texas coastal uplands	32.362778	-95.606389	surveillance	Van Zandt
8519903	Texas coastal uplands	27.651112	-99.629444	surveillance	Webb
6741810	Texas coastal uplands	29.258612	-97.931111	surveillance	Wilson
6848102	Texas coastal uplands	29.354723	-98.118611	surveillance	Wilson
6856409	Texas coastal uplands	29.19	-98.104723	surveillance	Wilson
6863803	Texas coastal uplands	29.010834	-98.191667	surveillance	Wilson
3407705	Texas coastal uplands	32.899722	-95.217222	surveillance	Wood
3421703	Texas coastal uplands	32.654167	-95.4875	surveillance	Wood
6959913	Texas coastal uplands	29.026389	-99.651389	surveillance	Zavala
7704441	Texas coastal uplands	28.954445	-99.618333	surveillance	Zavala
7710809	Texas coastal uplands	28.779444	-99.83	surveillance	Zavala
7718407	Texas coastal uplands	28.680555	-99.834167	surveillance	Zavala

TWDB state well number	national aquifer	latitude	longitude	monitoring type	county
1733504	Edwards-Trinity	33.4255556	-95.9577778	surveillance	Fannin
1810703	Edwards-Trinity	33.764167	-96.867778	surveillance	Grayson
1826102	Edwards-Trinity	33.6222222	-96.8644444	surveillance	Grayson
1827803	Edwards-Trinity	33.5325	-96.7019444	surveillance	Grayson
1829304	Edwards-Trinity	33.608056	-96.408612	surveillance	Grayson
1833303	Edwards-Trinity	33.4669444	-96.9136111	surveillance	Grayson
1835603	Edwards-Trinity	33.4238889	-96.6447222	surveillance	Grayson
1935301	Edwards-Trinity	33.459723	-97.637222	surveillance	Montague
1951901	Edwards-Trinity	33.1358333	-97.665	surveillance	Wise
1958103	Edwards-Trinity	33.1188889	-97.8513889	surveillance	Wise
1961408	Edwards-Trinity	33.0530556	-97.4725	surveillance	Wise
2759503	Edwards-Trinity	32.059723	-102.669722	surveillance	Ector

2953205	Edwards-Trinity	32.2344444	-100.4572222	surveillance	Nolan
3048202	Edwards-Trinity	32.355278	-99.052223	surveillance	Eastland
3052804	Edwards-Trinity	32.1611111	-99.5802778	surveillance	Callahan
3146207	Edwards-Trinity	32.343611	-98.302501	surveillance	Erath
3147502	Edwards-Trinity	32.3225	-98.193611	surveillance	Erath
3151532	Edwards-Trinity	32.1955556	-98.6783333	surveillance	Comanche
3153304	Edwards-Trinity	32.240556	-98.377778	surveillance	Erath
3156901	Edwards-Trinity	32.1561111	-98.0269444	surveillance	Erath
3158805	Edwards-Trinity	32.029722	-98.796667	surveillance	Comanche
3159333	Edwards-Trinity	32.105001	-98.646667	surveillance	Comanche
3164603	Edwards-Trinity	32.056389	-98.007778	surveillance	Erath
3202303	Edwards-Trinity	32.983334	-97.791389	surveillance	Parker
3206403	Edwards-Trinity	32.9411111	-97.3483333	surveillance	Tarrant
3215512	Edwards-Trinity	32.8169444	-97.1975	surveillance	Tarrant
3219309	Edwards-Trinity	32.749722	-97.635556	surveillance	Parker
3220105	Edwards-Trinity	32.710556	-97.604445	surveillance	Parker
3221504	Edwards-Trinity	32.7044444	-97.4522222	surveillance	Tarrant
3228405	Edwards-Trinity	32.557778	-97.598334	surveillance	Parker
3230110	Edwards-Trinity	32.5880556	-97.345	surveillance	Tarrant
3235501	Edwards-Trinity	32.422222	-97.673055	surveillance	Hood
3237801	Edwards-Trinity	32.400556	-97.430833	surveillance	Johnson
3237802	Edwards-Trinity	32.4005556	-97.4311111	surveillance	Johnson
3239406	Edwards-Trinity	32.434167	-97.231389	surveillance	Johnson
3239805	Edwards-Trinity	32.4155556	-97.1786111	surveillance	Johnson
3240606	Edwards-Trinity	32.421389	-97.023333	surveillance	Ellis
3240611	Edwards-Trinity	32.435278	-97.010278	surveillance	Ellis
3243202	Edwards-Trinity	32.3683333	-97.6911111	surveillance	Hood
3243904	Edwards-Trinity	32.263056	-97.658056	surveillance	Somervell
3248606	Edwards-Trinity	32.3086111	-97.015	surveillance	Ellis
3259406	Edwards-Trinity	32.0502778	-97.7466667	surveillance	Bosque
3302102	Edwards-Trinity	32.960278	-96.874444	surveillance	Dallas
3309701	Edwards-Trinity	32.7544444	-96.9958333	surveillance	Dallas
3325401	Edwards-Trinity	32.5744444	-96.9761111	surveillance	Dallas
3349608	Edwards-Trinity	32.180278	-96.8925	surveillance	Ellis
3925501	Edwards-Trinity	31.570555	-96.930833	surveillance	McLennan
3941604	Edwards-Trinity	31.307501	-96.895	surveillance	Falls
4002112	Edwards-Trinity	31.984722	-97.87	surveillance	Bosque
4009902	Edwards-Trinity	31.785556	-97.901389	surveillance	Hamilton
4012703	Edwards-Trinity	31.7741667	-97.5883333	surveillance	Bosque
4016405	Edwards-Trinity	31.8161111	-97.0925	surveillance	McLennan
4022103	Edwards-Trinity	31.7405556	-97.3433333	surveillance	Bosque
4023907	Edwards-Trinity	31.651945	-97.144445	surveillance	McLennan
4031708	Edwards-Trinity	31.503056	-97.228055	surveillance	McLennan
4037501	Edwards-Trinity	31.435	-97.419444	surveillance	McLennan
4039504	Edwards-Trinity	31.4580556	-97.2061111	surveillance	McLennan
4047102	Edwards-Trinity	31.366944	-97.224722	surveillance	McLennan
4049102	Edwards-Trinity	31.234445	-97.99	surveillance	Coryell

4054503	Edwards-Trinity	31.2027778	-97.2941667	surveillance	Bell
4101234	Edwards-Trinity	31.9804472	-98.9230111	surveillance	Brown
4102903	Edwards-Trinity	31.8966667	-98.7805556	surveillance	Comanche
4105104	Edwards-Trinity	31.989722	-98.458612	surveillance	Comanche
4107514	Edwards-Trinity	31.9172222	-98.1719444	surveillance	Hamilton
4108309	Edwards-Trinity	31.9802778	-98.0291667	surveillance	Hamilton
4111303	Edwards-Trinity	31.860834	-98.639167	surveillance	Comanche
4112903	Edwards-Trinity	31.769722	-98.518889	surveillance	Comanche
4113307	Edwards-Trinity	31.8538889	-98.4025	surveillance	Comanche
4120604	Edwards-Trinity	31.676389	-98.511112	surveillance	Mills
4123605	Edwards-Trinity	31.703889	-98.167778	surveillance	Hamilton
4136206	Edwards-Trinity	31.479444	-98.561389	surveillance	Mills
4249104	Edwards-Trinity	31.218055	-99.963889	surveillance	Concho
4352606	Edwards-Trinity	31.179722	-100.503056	surveillance	Tom Green
4412410	Edwards-Trinity	31.821111	-101.62	surveillance	Glasscock
4417409	Edwards-Trinity	31.6941667	-101.9919444	surveillance	Midland
4418203	Edwards-Trinity	31.731944	-101.829444	surveillance	Midland
4419311	Edwards-Trinity	31.737222	-101.658889	surveillance	Glasscock
4420555	Edwards-Trinity	31.701667	-101.560834	surveillance	Glasscock
4428108	Edwards-Trinity	31.616112	-101.619167	surveillance	Reagan
4435909	Edwards-Trinity	31.405834	-101.631944	surveillance	Reagan
4437404	Edwards-Trinity	31.455834	-101.473611	surveillance	Reagan
4445703	Edwards-Trinity	31.287222	-101.469722	surveillance	Reagan
4449111	Edwards-Trinity	31.233334	-101.968889	surveillance	Upton
4451703	Edwards-Trinity	31.131389	-101.7225	surveillance	Reagan
4457304	Edwards-Trinity	31.097222	-101.886111	surveillance	Upton
4460305	Edwards-Trinity	31.086667	-101.501112	surveillance	Reagan
4503301	Edwards-Trinity	31.9594444	-102.64	surveillance	Ector
4504120	Edwards-Trinity	31.9888889	-102.6152778	surveillance	Ector
4505705	Edwards-Trinity	31.9151944	-102.4789167	surveillance	Ector
4515801	Edwards-Trinity	31.7830556	-102.1675	surveillance	Midland
4516208	Edwards-Trinity	31.8525	-102.0708333	surveillance	Midland
4522604	Edwards-Trinity	31.6936111	-102.28	surveillance	Midland
4532502	Edwards-Trinity	31.5752778	-102.0561111	surveillance	Upton
4532704	Edwards-Trinity	31.539445	-102.110834	surveillance	Upton
4557801	Edwards-Trinity	31.000834	-102.920278	surveillance	Pecos
4557903	Edwards-Trinity	31.032222	-102.894445	surveillance	Pecos
5202611	Edwards-Trinity	30.944167	-103.788056	surveillance	Reeves
5206504	Edwards-Trinity	30.9386111	-103.3075	surveillance	Pecos
5207501	Edwards-Trinity	30.938056	-103.186667	surveillance	Pecos
5216903	Edwards-Trinity	30.786945	-103.026944	surveillance	Pecos
5223601	Edwards-Trinity	30.701945	-103.148056	surveillance	Pecos
5302803	Edwards-Trinity	30.893611	-102.796111	surveillance	Pecos
5308501	Edwards-Trinity	30.9563889	-102.0425	surveillance	Pecos
5313209	Edwards-Trinity	30.844722	-102.455556	surveillance	Pecos
5331603	Edwards-Trinity	30.5683333	-102.1572222	surveillance	Terrell
5344901	Edwards-Trinity	30.269722	-102.5375	surveillance	Terrell

5351801	Edwards-Trinity	30.151112	-102.687222	surveillance	Pecos
5353901	Edwards-Trinity	30.151667	-102.409445	surveillance	Terrell
5363401	Edwards-Trinity	30.048334	-102.211945	surveillance	Terrell
5404708	Edwards-Trinity	30.879444	-101.612778	surveillance	Crockett
5423111	Edwards-Trinity	30.7191667	-101.2219444	surveillance	Crockett
5438903	Edwards-Trinity	30.398611	-101.279444	surveillance	Crockett
5440703	Edwards-Trinity	30.385834	-101.088889	surveillance	Crockett
5501705	Edwards-Trinity	30.904445	-100.959167	surveillance	Schleicher
5502508	Edwards-Trinity	30.946111	-100.813612	surveillance	Schleicher
5508204	Edwards-Trinity	30.978611	-100.048611	surveillance	Menard
5512101	Edwards-Trinity	30.858889	-100.598889	surveillance	Schleicher
5513905	Edwards-Trinity	30.767778	-100.399445	surveillance	Schleicher
5517805	Edwards-Trinity	30.632222	-100.933334	surveillance	Sutton
5523202	Edwards-Trinity	30.735278	-100.170833	surveillance	Schleicher
5526505	Edwards-Trinity	30.556112	-100.812501	surveillance	Sutton
5533709	Edwards-Trinity	30.390278	-100.970278	surveillance	Crockett
5544801	Edwards-Trinity	30.2663889	-100.5658333	surveillance	Edwards
5545309	Edwards-Trinity	30.351667	-100.413889	surveillance	Sutton
5554501	Edwards-Trinity	30.175	-100.301667	surveillance	Edwards
5563709	Edwards-Trinity	30.0155556	-100.2119444	surveillance	Edwards
5617903	Edwards-Trinity	30.646111	-99.894445	surveillance	Kimble
5635104	Edwards-Trinity	30.462223	-99.749722	surveillance	Kimble
5648103	Edwards-Trinity	30.33525	-99.1238056	surveillance	Gillespie
5660103	Edwards-Trinity	30.118333	-99.618611	surveillance	Kerr
5739301	Edwards-Trinity	30.4805556	-98.1441667	surveillance	Burnet
5740312	Edwards-Trinity	30.470555	-98.000001	surveillance	Travis
5741403	Edwards-Trinity	30.3258333	-98.9677778	surveillance	Gillespie
5747403	Edwards-Trinity	30.3197222	-98.2133333	surveillance	Blanco
5750119	Edwards-Trinity	30.2494444	-98.8380556	surveillance	Gillespie
5752609	Edwards-Trinity	30.203612	-98.528055	surveillance	Blanco
5754506	Edwards-Trinity	30.195556	-98.292778	surveillance	Blanco
5756704	Edwards-Trinity	30.1511111	-98.0861111	surveillance	Hays
5763707	Edwards-Trinity	30.031667	-98.220278	surveillance	Hays
5763905	Edwards-Trinity	30.034445	-98.126111	surveillance	Hays
5806601	Edwards-Trinity	30.9491667	-97.27	surveillance	Bell
5814402	Edwards-Trinity	30.802501	-97.363889	surveillance	Bell
5817803	Edwards-Trinity	30.666112	-97.920833	surveillance	Williamson
5819303	Edwards-Trinity	30.7136111	-97.6508333	surveillance	Williamson
5820204	Edwards-Trinity	30.73	-97.5469444	surveillance	Williamson
5821204	Edwards-Trinity	30.7205556	-97.4444444	surveillance	Williamson
5829608	Edwards-Trinity	30.5555556	-97.3972222	surveillance	Williamson
5835306	Edwards-Trinity	30.488611	-97.658889	surveillance	Williamson
5842936	Edwards-Trinity	30.279444	-97.784167	surveillance	Travis
5849936	Edwards-Trinity	30.157501	-97.914445	surveillance	Hays
5850215	Edwards-Trinity	30.227778	-97.810278	surveillance	Travis
5850424	Edwards-Trinity	30.1873333	-97.8745278	surveillance	Travis
5857211	Edwards-Trinity	30.0855556	-97.9238889	surveillance	Hays

5857512	Edwards-Trinity	30.0586111	-97.9211111	surveillance	Hays
5858121	Edwards-Trinity	30.105556	-97.862223	surveillance	Hays
6701810	Edwards-Trinity	29.89	-97.945	surveillance	Hays
6801212	Edwards-Trinity	29.975833	-98.917778	surveillance	Kendall
6804803	Edwards-Trinity	29.8938889	-98.5594444	surveillance	Kendall
6811731	Edwards-Trinity	29.7825	-98.708889	surveillance	Kendall
6815901	Edwards-Trinity	29.759723	-98.140556	surveillance	Comal
6821415	Edwards-Trinity	29.6936111	-98.48	surveillance	Bexar
6822805	Edwards-Trinity	29.632222	-98.299445	surveillance	Comal
6823203	Edwards-Trinity	29.710278	-98.192222	surveillance	Comal
6823301	Edwards-Trinity	29.7108333	-98.1372222	surveillance	Comal
6823303	Edwards-Trinity	29.713889	-98.134445	surveillance	Comal
6823321	Edwards-Trinity	29.7138889	-98.1366667	surveillance	Comal
6825303	Edwards-Trinity	29.596389	-98.891111	surveillance	Medina
6828921	Edwards-Trinity	29.504445	-98.54	surveillance	Bexar
6829613	Edwards-Trinity	29.564723	-98.385278	surveillance	Bexar
6829811	Edwards-Trinity	29.513889	-98.447778	surveillance	Bexar
6830225	Edwards-Trinity	29.62	-98.304167	surveillance	Comal
6835106	Edwards-Trinity	29.482222	-98.714167	surveillance	Bexar
6835617	Edwards-Trinity	29.4541667	-98.6411111	surveillance	Bexar
6835912	Edwards-Trinity	29.4161111	-98.6386111	surveillance	Bexar
6836818	Edwards-Trinity	29.3813889	-98.5558333	surveillance	Bexar
6837427	Edwards-Trinity	29.4227778	-98.4880556	surveillance	Bexar
6838107	Edwards-Trinity	29.4922222	-98.3480556	surveillance	Bexar
6841303	Edwards-Trinity	29.3572222	-98.8763889	surveillance	Medina
6841901	Edwards-Trinity	29.2775	-98.8788889	surveillance	Medina
6842506	Edwards-Trinity	29.3083333	-98.815	surveillance	Medina
6844101	Edwards-Trinity	29.368889	-98.603889	surveillance	Bexar
6849301	Edwards-Trinity	29.2330556	-98.8891667	surveillance	Medina
6908514	Edwards-Trinity	29.942222	-99.045556	surveillance	Kerr
6938906	Edwards-Trinity	29.3886111	-99.2644444	surveillance	Medina
6945405	Edwards-Trinity	29.327222	-99.468611	surveillance	Uvalde
6950207	Edwards-Trinity	29.2280556	-99.7955556	surveillance	Uvalde
6951114	Edwards-Trinity	29.221111	-99.748611	surveillance	Uvalde
6955604	Edwards-Trinity	29.206112	-99.165556	surveillance	Medina
7007902	Edwards-Trinity	29.8927778	-100.1347222	surveillance	Edwards
7011501	Edwards-Trinity	29.793056	-100.674722	surveillance	Edwards
7017502	Edwards-Trinity	29.686945	-100.931944	surveillance	Val Verde
7021501	Edwards-Trinity	29.683889	-100.422222	surveillance	Edwards
7029101	Edwards-Trinity	29.5975	-100.4713889	surveillance	Kinney
7041302	Edwards-Trinity	29.372778	-100.885	surveillance	Val Verde
7045501	Edwards-Trinity	29.310278	-100.421111	surveillance	Kinney
7045505	Edwards-Trinity	29.310556	-100.421944	surveillance	Kinney
7045601	Edwards-Trinity	29.316667	-100.414445	surveillance	Kinney
7122501	Edwards-Trinity	29.7045278	-101.3235278	surveillance	Val Verde
7123502	Edwards-Trinity	29.6975	-101.196945	surveillance	Val Verde
7140307	Edwards-Trinity	29.4713889	-101.0361111	surveillance	Val Verde

7207601	Edwards-Trinity	29.944445	-102.136111	surveillance	Terrell
TWDB state well number	national aquifer	latitude	longitude	monitoring type	county
2130301	Seymour	33.608334	-99.284167	surveillance	Baylor
554812	Seymour	35.165001	-100.306389	surveillance	Collingsworth
1205911	Seymour	34.903334	-100.397222	surveillance	Collingsworth
2915503	Seymour	32.816389	-100.1725	surveillance	Fisher
1360420	Seymour	34.055834	-99.616112	surveillance	Foard
1360508	Seymour	34.054167	-99.575278	surveillance	Foard
1219104	Seymour	34.709445	-100.721667	surveillance	Hall
1242404	Seymour	34.3297222	-100.8491667	surveillance	Hall
2141407	Seymour	33.305556	-99.987778	surveillance	Haskell
2142459	Seymour	33.315001	-99.855001	surveillance	Haskell
2149603	Seymour	33.185556	-99.898334	surveillance	Haskell
3026407	Seymour	32.569722	-99.850278	surveillance	Jones
2119201	Seymour	33.745834	-99.673611	surveillance	Knox
2127803	Seymour	33.539167	-99.690278	surveillance	Knox
2134855	Seymour	33.415278	-99.817778	surveillance	Knox
2135103	Seymour	33.489167	-99.730555	surveillance	Knox
1241518	Seymour	34.291945	-100.935556	surveillance	Motley
2254201	Seymour	33.221667	-100.302223	surveillance	Stonewall
1449823	Seymour	34.156945	-98.9325	surveillance	Wichita
1459201	Seymour	34.119167	-98.673611	surveillance	Wichita
1460614	Seymour	34.078055	-98.525	surveillance	Wichita
1461413	Seymour	34.048611	-98.467222	surveillance	Wichita
1346106	Seymour	34.3641667	-99.3569444	surveillance	Wilbarger
1354829	Seymour	34.131111	-99.301667	surveillance	Wilbarger
1356805	Seymour	34.155278	-99.056389	surveillance	Wilbarger
1362161	Seymour	34.089445	-99.364723	surveillance	Wilbarger
TWDB state well number	national aquifer	latitude	longitude	monitoring type	county
2733202	High Plains	32.470555	-102.954167	surveillance	Andrews
2736211	High Plains	32.4650556	-102.5786944	surveillance	Andrews
2737106	High Plains	32.4752222	-102.4613333	surveillance	Andrews
2738101	High Plains	32.4780556	-102.3522222	surveillance	Andrews
2738603	High Plains	32.435556	-102.262778	surveillance	Andrews
2739404	High Plains	32.445278	-102.215834	surveillance	Andrews
2750502	High Plains	32.17	-102.808612	surveillance	Andrews
1105201	High Plains	34.971944	-101.445	surveillance	Armstrong
1112511	High Plains	34.819444	-101.546389	surveillance	Armstrong
1041801	High Plains	34.2775	-102.934445	surveillance	Bailey
2409604	High Plains	33.833055	-102.916389	surveillance	Bailey
1137942	High Plains	34.405556	-101.376389	surveillance	Briscoe
628103	High Plains	35.600834	-101.594167	surveillance	Carson
1024805	High Plains	34.633334	-102.050556	surveillance	Castro
1032401	High Plains	34.542778	-102.103889	surveillance	Castro

1038202	High Plains	34.4825	-102.302223	surveillance	Castro
1040708	High Plains	34.386945	-102.117222	surveillance	Castro
2417503	High Plains	33.688889	-102.921389	surveillance	Cochran
2418308	High Plains	33.731389	-102.752223	surveillance	Cochran
2427903	High Plains	33.505001	-102.628333	surveillance	Cochran
2428104	High Plains	33.600556	-102.62	surveillance	Cochran
2313503	High Plains	33.796111	-101.444722	surveillance	Crosby
2322103	High Plains	33.740278	-101.346389	surveillance	Crosby
2328312	High Plains	33.592778	-101.536111	surveillance	Crosby
2329202	High Plains	33.618333	-101.434722	surveillance	Crosby
2329403	High Plains	33.556112	-101.462778	surveillance	Crosby
140301	High Plains	36.4933333	-103.0391667	surveillance	Dallam
242202	High Plains	36.364445	-102.798889	surveillance	Dallam
246702	High Plains	36.283889	-102.367222	surveillance	Dallam
247802	High Plains	36.263334	-102.1725	surveillance	Dallam
253702	High Plains	36.133611	-102.473333	surveillance	Dallam
260502	High Plains	36.063889	-102.548056	surveillance	Dallam
260609	High Plains	36.061389	-102.5325	surveillance	Dallam
2707607	High Plains	32.932222	-102.127778	surveillance	Dawson
2732702	High Plains	32.541111	-102.117778	surveillance	Dawson
2809804	High Plains	32.7569444	-101.9580556	surveillance	Dawson
2826902	High Plains	32.540834	-101.763889	surveillance	Dawson
751401	High Plains	35.1669444	-102.7455556	surveillance	Deaf Smith
755703	High Plains	35.160001	-102.225555	surveillance	Deaf Smith
757601	High Plains	35.062501	-102.901667	surveillance	Deaf Smith
1002502	High Plains	34.928611	-102.816667	surveillance	Deaf Smith
1011403	High Plains	34.795	-102.709167	surveillance	Deaf Smith
1013536	High Plains	34.805001	-102.420555	surveillance	Deaf Smith
551802	High Plains	35.134445	-100.685834	surveillance	Donley
559101	High Plains	35.113056	-100.748056	surveillance	Donley
1144905	High Plains	34.256667	-101.520833	surveillance	Floyd
2308403	High Plains	33.943889	-101.088056	surveillance	Floyd
2702811	High Plains	32.900556	-102.794722	surveillance	Gaines
2702908	High Plains	32.914723	-102.790556	surveillance	Gaines
2704505	High Plains	32.942778	-102.562778	surveillance	Gaines
2719312	High Plains	32.713612	-102.652223	surveillance	Gaines
2726404	High Plains	32.567778	-102.843889	surveillance	Gaines
525401	High Plains	35.560556	-100.993334	surveillance	Gray
525503	High Plains	35.554167	-100.940556	surveillance	Gray
1141903	High Plains	34.280833	-101.900834	surveillance	Hale
1151510	High Plains	34.187222	-101.696389	surveillance	Hale
2302902	High Plains	33.876111	-101.756667	surveillance	Hale
2312106	High Plains	33.865834	-101.599722	surveillance	Hale
353202	High Plains	36.234722	-101.429167	surveillance	Hansford
355504	High Plains	36.202223	-101.184167	surveillance	Hansford
362103	High Plains	36.123611	-101.349722	surveillance	Hansford
701203	High Plains	35.965834	-102.951667	surveillance	Hartley

707402	High Plains	35.935834	-102.212501	surveillance	Hartley
712101	High Plains	35.839167	-102.599167	surveillance	Hartley
713602	High Plains	35.823611	-102.409723	surveillance	Hartley
722401	High Plains	35.6727778	-102.34	surveillance	Hartley
523710	High Plains	35.6338889	-100.2333333	surveillance	Hemphill
2414703	High Plains	33.754723	-102.334722	surveillance	Hockley
2415617	High Plains	33.816112	-102.161389	surveillance	Hockley
2430410	High Plains	33.579444	-102.363889	surveillance	Hockley
2440406	High Plains	33.450278	-102.117778	surveillance	Hockley
362902	High Plains	36.0072222	-101.2825	surveillance	Hutchinson
605102	High Plains	35.981389	-101.461667	surveillance	Hutchinson
613704	High Plains	35.785834	-101.490834	surveillance	Hutchinson
1046704	High Plains	34.259167	-102.360001	surveillance	Lamb
1060606	High Plains	34.074167	-102.508612	surveillance	Lamb
1062203	High Plains	34.117778	-102.296667	surveillance	Lamb
2407606	High Plains	33.928055	-102.158056	surveillance	Lamb
440502	High Plains	36.4491667	-100.0511111	surveillance	Lipscomb
444301	High Plains	36.371667	-100.530555	surveillance	Lipscomb
446402	High Plains	36.325833	-100.338056	surveillance	Lipscomb
461102	High Plains	36.120555	-100.475833	surveillance	Lipscomb
2317412	High Plains	33.679167	-101.989167	surveillance	Lubbock
2319815	High Plains	33.660001	-101.681944	surveillance	Lubbock
2327720	High Plains	33.535556	-101.711112	surveillance	Lubbock
2432911	High Plains	33.508612	-102.004445	surveillance	Lubbock
2341603	High Plains	33.325	-101.910834	surveillance	Lynn
2343407	High Plains	33.315834	-101.728889	surveillance	Lynn
2350602	High Plains	33.205556	-101.785834	surveillance	Lynn
2802207	High Plains	32.968889	-101.830278	surveillance	Lynn
2739901	High Plains	32.3776389	-102.1391944	surveillance	Martin
2850301	High Plains	32.232222	-101.765556	surveillance	Martin
2764804	High Plains	32.035834	-102.071944	surveillance	Midland
2857703	High Plains	32.034167	-101.998056	surveillance	Midland
4507602	High Plains	31.9225	-102.140278	surveillance	Midland
264911	High Plains	36.033334	-102.002223	surveillance	Moore
601116	High Plains	35.9969444	-101.9880556	surveillance	Moore
708615	High Plains	35.938889	-102.018611	surveillance	Moore
449602	High Plains	36.183889	-100.911389	surveillance	Ochiltree
451302	High Plains	36.218889	-100.647222	surveillance	Ochiltree
451502	High Plains	36.168611	-100.689722	surveillance	Ochiltree
744501	High Plains	35.3316667	-102.5705556	surveillance	Oldham
753224	High Plains	35.241667	-102.421111	surveillance	Oldham
940912	High Plains	34.378889	-103.005556	surveillance	Parmer
1019502	High Plains	34.668055	-102.706945	surveillance	Parmer
1025905	High Plains	34.515001	-102.894445	surveillance	Parmer
1036704	High Plains	34.393889	-102.614445	surveillance	Parmer
643604	High Plains	35.311112	-101.628611	surveillance	Potter
649310	High Plains	35.243056	-101.893889	surveillance	Potter

649805	High Plains	35.132222	-101.926389	surveillance	Randall
763328	High Plains	35.088611	-102.155834	surveillance	Randall
763626	High Plains	35.042778	-102.1475	surveillance	Randall
1008414	High Plains	34.922222	-102.089722	surveillance	Randall
509503	High Plains	35.831389	-100.934722	surveillance	Roberts
248107	High Plains	36.342222	-102.085	surveillance	Sherman
1125703	High Plains	34.530833	-101.974167	surveillance	Swisher
1141405	High Plains	34.321389	-101.993334	surveillance	Swisher
2454609	High Plains	33.183334	-102.261945	surveillance	Terry
2455302	High Plains	33.2375	-102.153334	surveillance	Terry
2461502	High Plains	33.045834	-102.431944	surveillance	Terry
530707	High Plains	35.519444	-100.368055	surveillance	Wheeler
538512	High Plains	35.452778	-100.308334	surveillance	Wheeler
2441101	High Plains	33.341945	-102.999445	surveillance	Yoakum
2450406	High Plains	33.183611	-102.851389	surveillance	Yoakum

TWDB state well number	national aquifer	latitude	longitude	monitoring type	county
-------------------------------	-------------------------	-----------------	------------------	------------------------	---------------

2750103	Pecos River Basin	32.241111	-102.871111	surveillance	Andrews
4535506	Pecos River Basin	31.454723	-102.669167	surveillance	Crane
4618201	Pecos River Basin	31.709723	-103.821111	surveillance	Reeves
4626401	Pecos River Basin	31.5702778	-103.8722222	surveillance	Reeves
4635905	Pecos River Basin	31.378889	-103.634167	surveillance	Reeves
4636707	Pecos River Basin	31.378611	-103.623333	surveillance	Reeves
4642504	Pecos River Basin	31.329722	-103.814445	surveillance	Reeves
4648401	Pecos River Basin	31.293611	-103.102501	surveillance	Reeves
4662201	Pecos River Basin	31.106945	-103.297778	surveillance	Reeves
5203119	Pecos River Basin	30.993056	-103.731944	surveillance	Reeves
4518803	Pecos River Basin	31.635556	-102.817222	surveillance	Ward
4525710	Pecos River Basin	31.511667	-102.996945	surveillance	Ward
4533109	Pecos River Basin	31.498056	-102.998334	surveillance	Ward
4624715	Pecos River Basin	31.628055	-103.085834	surveillance	Ward
4640314	Pecos River Basin	31.483611	-103.0175	surveillance	Ward
4615918	Pecos River Basin	31.759723	-103.160001	surveillance	Winkler
4616102	Pecos River Basin	31.8468889	-103.0996389	surveillance	Winkler

TWDB state well number	national aquifer	latitude	longitude	monitoring type	county
-------------------------------	-------------------------	-----------------	------------------	------------------------	---------------

4904149	Rio Grande	31.996389	-106.606389	surveillance	El Paso
4908603	Rio Grande	31.926667	-106.040278	surveillance	El Paso
4915521	Rio Grande	31.798334	-106.185	surveillance	El Paso
4915803	Rio Grande	31.780555	-106.169722	surveillance	El Paso
4931919	Rio Grande	31.501945	-106.150834	surveillance	El Paso
4904149	Rio Grande	31.996389	-106.606389	surveillance	El Paso
4907806	Rio Grande	31.883055	-106.200278	surveillance	El Paso
4922627	Rio Grande	31.695	-106.269167	surveillance	El Paso
4923506	Rio Grande	31.683611	-106.171667	surveillance	El Paso